



2013-2014 年報
Annual Report

基督教愛協團契
Christian Oi Hip
Fellowship Ltd.

目錄 CONTENTS

		頁數Page
機構簡史	History of the Fellowship	1
宗旨及服務	Objectives and Services	3
組織架構	Organizational Structure	4
成員名單	Lists of Members	5
主席的話	From the Chairman	9
各委員會報告	Reports of Sub-committees	
健康教育及推廣組	Mental Health Education & Promotion Committee	10
小組及輔導組	Group & Counseling Committee	11
義工組	Volunteer Committee	12
資源中心組	Resource Centre Committee	12
靈牧組	Pastoral Care Committee	13
探訪組	Visit Committee	14
各小組報告	Reports of Groups	
迦勒組	Caleb Group	15
拉撒路組	Lazarus Group	15
明亮組	Brightness Group	16
提摩太組	Timothy Group	16
伯特利組	Bethel Group	17
摩西組	Moses Group	17
約翰組	John Group	18
真情組	Sincere Group	18
平安組	Peace Group	19
青少年組	Youth Group	19
約瑟組	Joseph Group	20
以馬內利組	Emmanuel Group	20
約書亞組	Joshua Group	21
家屬組	Relative Group	21
以利亞組	Elijah Group	22
穩基底組	Ein Gedi Group	22
東區組	Hong Kong Island East Group	23
活動報告	Report of Activities	24
諮詢服務報告	Report of Enquiry Service	29
同工報告	Staff's Report	30
財政報告2013/2014	Financial Report 2013/2014	31
財政預算2014/2015	Budget 2014/2015	35
資料統計	Statistics	36
鳴謝	Acknowledgements	41

機構簡史



本年度於二月在港島東區已開設一個新組，至今本團合共有十八個小組了，各組聚會內容主要有專題討論、信仰及生活分享等。去年還新增一項讚美操活動，結合讚美與健身運動於一身，每月兩次，讓組員心靈暢快，身心舒展。此外，愛協團契每年都有舉辦不同的活動，如：旅行、宿營、行山、羽毛球及興趣班等等，讓組員可以誇組彼此認識，擴闊社交圈子。

除了上述小組工作及推廣心理健康教育外，我們也會為一些組員提供家訪和個人輔導，而且亦會為教會及社會人士提供有關精神健康的諮詢服務；同時也會定期被應邀到各教會、學校及社團主持講座、短期培訓課程、分享見證、以及協助教會成立康復者或家屬之互助小組。以下是本團之簡史：

年份	事 情
1989	開始每月一次聚會，在九零年增加為每月兩次。
1990	六月二十日，正式定名為「愛協團契」。
1991	向政府辦理註冊手續，同年十月正式註冊為非牟利有限公司。
1993	被公益金接納為會員，支持團契部份的經費，而團契的經濟主要是依賴弟兄姊妹及教會的熱心奉獻與支持。
1994	九四年開始與神學院合辦有關心理健康課程，幫助社會人士認識精神病及其處理方法，而到零七年則由本團獨力開辦此課程。
1996	成立愛協資源中心，為組員及社會人士提供有關精神健康之資料、書刊及影音借閱服務。同年八月增設靈牧組，關懷組員在靈性生活上之培育。
1997	成為香港社會服務聯會會員。
1998	又被香港基督教機構協會接納為會員機構。同年五月得蒙世界傳道會／那打素基金慷慨撥款，使團契能購得位於九龍青山道244號達明大廈2字樓為本團會址。
2001	一月成立青少年小組，專為思覺失調及情緒困擾的青少年康復者提供服務。
2007	四月成立第一個日間家屬小組，協助家屬照顧康復者。
2008	六月成立一個情緒病小組名為以利亞組，使神經官能症的康復者有效地處理其問題。
2009	七月成立另一個晚間家屬小組，協助家屬照顧康復者。
2013	三月於紅磡及土瓜灣區開設一個小組，名為隱基底組。
2014	二月於香港島東區假中華基督教會之青年廣場柴房開設一新互助小組，服侍港島區的康復者和弟兄姊妹。

HISTORY OF THE FELLOWSHIP



A new mutual help group has been set up since February 2014 to serve the ex-mental ill in the Hong Kong Island East area. Up to now, we have 18 small groups. The contents of group meetings are mainly on talks about specific topics, prayer and sharing. Last year, a Praise Dance Project was established and has been run twice a month. It could help our members relax themselves and nourish their spirits. Furthermore, the Oi Hip Fellowship organizes various activities each year, for example, outing, camping, hiking, badminton, and interesting classes so that group members have a chance to know other intra-group members and enlarge their social circle.

Besides the above group work and mental health education, we provide home visit and individual counseling for some members. Enquiry service is available for churches and the public for consultation on problems relating to mental illness. We will also be invited to churches, schools and other organizations to present talks and short-term courses and share our witness and work regularly. Furthermore, we would like to help church to establish mutual-help group for the ex-mental patients and their relatives. Our brief history is list as below.

Year	Events
1989	The fellowship held one meeting every month. In 1990, the gatherings increased to twice a month.
1990	On June 20, the fellowship was named as Oi Hip Fellowship.
1991	Oi Hip managed to register with the Government Registry. In October of the same year, it was registered as a non-profit organization.
1993	We were accepted by the Community Chest and started to receive its fund for part of our expenditure. The rest of our funding relies mainly on the donation of Churches and our Christian brothers and sisters.
1994	From 1994, we cooperated with the seminary in holding courses on mental health every year to educate the public to learn more about mental illness and the ways to cope with and until 2007, we tried to hold these courses by ourselves.
1996	Oi Hip Fellowship Resource Centre was set up, providing information service, books, magazines and audio-visual materials lending service to the members and the public. In August of the same year, Pastoral Care Committee was established in order to foster the growth of our members' spiritual lives.
1997	Oi Hip officially became a member of the Hong Kong Council of Social Service.
1998	Oi Hip was also accepted as a member of Hong Kong Association of Christian Organizations. In May 1998, through the generous grant of CWM / Nethersole Fund, our fellowship bought a site at 2/F, Tat Ming Building, 244 Castle Peak Road, Kowloon.
2001	In January, one youth group was set up to serve the young ex-patients with early psychosis and mood disorder.
2007	In April, one ex-mental patient's relative group was established in the daytime in order to help the relatives to take care of their ex-patients.
2008	In June, one mood disorder group, Elijah group, was established in order to help the neurotic ex-patients to cope with their problems effectively.
2009	In July, one ex-mental patient's relative group was established in the evening in order to help the relatives to take care of their ex-patients.
2013	In March, one ex-mental patients' group called En-gedi Group was set up in Hung Hom and To Kwa Wan.
2014	In February, a new ex-mental patients' group, was set up on the Hong Kong island. It is located in the Chai Wan Youth Square. We hope we can serve the ex-mentally ill and brothers and sisters in Lord in this area.

宗旨：

1. 提供精神病康復者「全人關顧」；
2. 建立有效的支持系統，以減低病發的機會；
3. 協助教會牧養精神病康復者；
4. 協助康復者重投社會及教會生活；
5. 推廣心理健康教育。

服務：

1. 個人照顧：注重組員個別之需要，幫助其成長及改變，提供輔導及家訪。
2. 小組工作：著重彼此在信仰及生活上的支持，並鼓勵獨立、自助及互相支持。
3. 諮詢訓練：協助教會及社會人士關懷康復者，提供諮詢服務及推廣心理健康教育。
4. 群體活動：提供興趣班，戶外活動以促進組員之社交技巧及提高生活之素質。
5. 資源中心：推廣心理衛生及精神公眾健康教育，以及提供知識和資源以協助康復者及社會人士解決個人問題。



Objectives and Services

Objectives:

1. To provide "holistic care" for ex-mental patients.
2. To establish effective support system and reduce chance of relapse.
3. To help churches in caring for ex-mental patients.
4. To help the ex-patients to re-integrate into the society and churches.
5. To promote mental health education.

Main Services:

1. Personal Care

To emphasize on individual needs, help clients to grow and change, provide counseling and home visits.

2. Group work

To emphasize on mutual support in belief and daily living and encourage them to be independent and to help each other.

3. Consultation and training

To assist churches and the public in caring ex-patients, provide consultation service and promote mental health education.

4. Communal activities

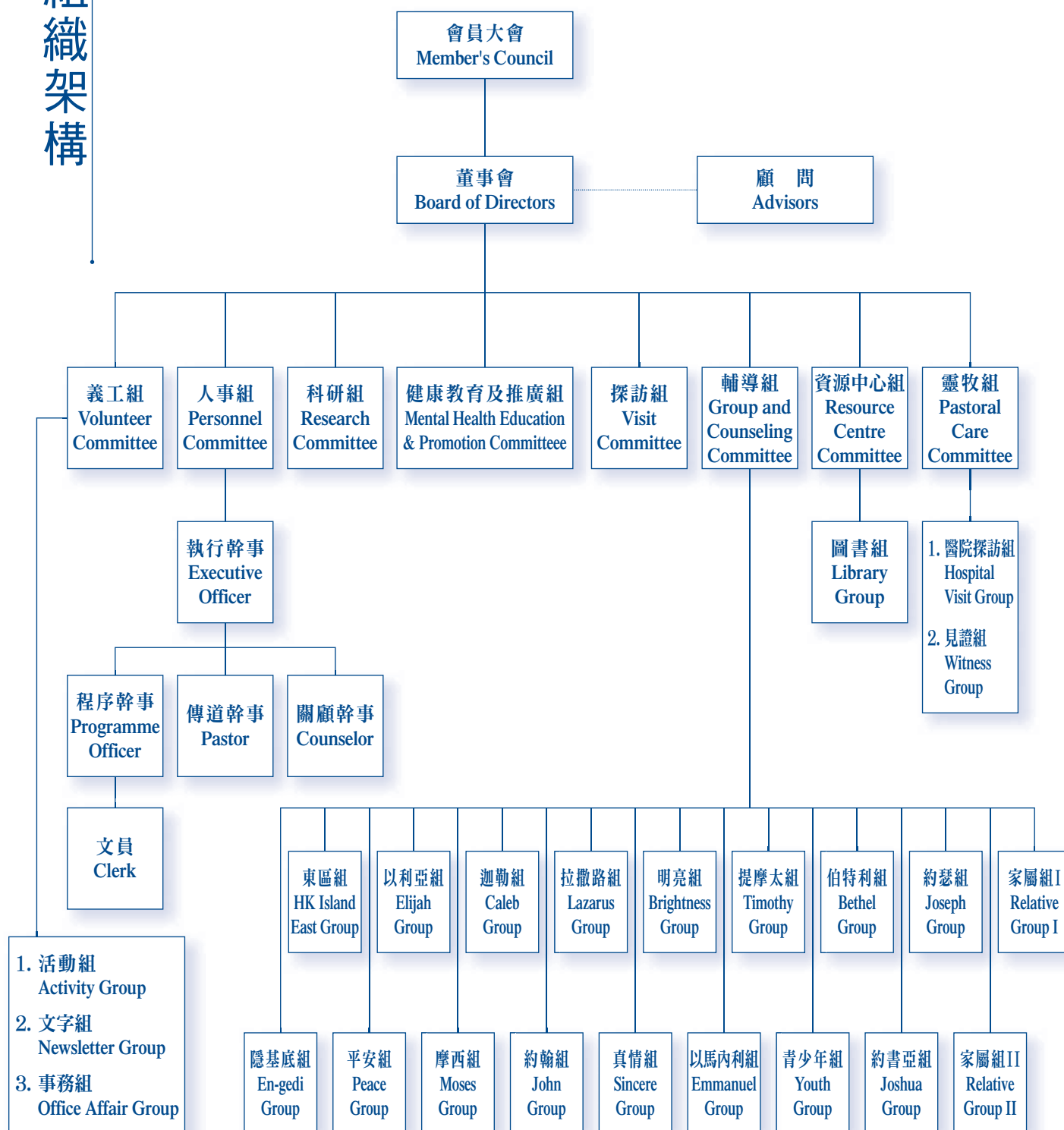
To provide interest classes and outdoor activities so as to improve their social skills and the quality of life.

5. Ex-mental patients' resource centre

To promote mental health and psychiatric public education as well as provide the ex-mentally ill and the public more knowledge and resources to cope with their problems.

Organization Structure

組織架構



2013/2014年成員名單

(成組包括愛協組員、精神科醫生、精神科護士、牧者、教授、職業治療師、註冊社工、輔導員等)

顧問

麥基恩醫生 康貴華醫生 陳熾鴻醫生 吳炳華牧師

董事會

主席：陸亮博士
副主席：劉景君姑娘 梁美娟小姐
文書：李金好女士
司庫：翁鳳玲小姐 黃綺華小姐
委員：林會真女士 張超勤先生 廖廣申醫生

團牧

陳一華牧師

工作小組

人事組

召集人：陸亮 劉景君 廖廣申

健康教育及推廣組

召集人：翁鳳玲
委員：張超勤 王文臬 王慧蓮 顏俊
C. H. Chan 唐展沛 蘇麗貞 黃綺華
陳金英 梁夢熊

輔導組

召集人：劉景君
委員：廖廣申 劉麗蓉 陸亮 謝樹基
郭初航 黃慧純 陳金英 王錦洪
林達明 梁夢熊

義工組

召集人：梁美娟
委員：邱超奇 黃國齊 王慧蓮 王智勇
王文臬 鍾紹華 黃樂人 陳崇榮
賈福龍 梁珮琪 王錦洪 古穎儀
梁夢熊

資源中心組

召集人：黃宗保
委員：黃綺華 王文臬 王慧蓮 邱超奇
梁美娟 唐展沛 劉幗慧 王智勇
馮劍偉 古穎儀 王錦洪 梁夢熊

靈牧組

召集人：陳一華
委員：陳彩霞 李金好 蔡志誠 C. H. Chan
古穎儀 陳金英 林達明 梁夢熊

探訪組

召集人：葉翠寧
委員：林會真 范秋萍 顏俊 王慧蓮
王文臬 駿駒 邱超奇 劉幗慧
苑霞 石頌靈 馮劍偉 林達明

五餅二魚組

召集人：梁美娟
委員：趙文賢 賈福龍 羅文浩 徐小玲
王錦洪 陳金英 林達明 梁夢熊

小組職員

迦勒組：組長：曉樺
副組長：國忠
文書：阜讓
財政：秋雲
靈修：曉樺
聯絡：永輝、光明、鳳屏
探訪：漢忠、修齊
康樂：國忠
總務：修齊、永輝、漢忠
小組長：秋雲、光明、李琦
義工：Daisy
導師：黃宏娟、Jimmy, Cathy、王錦洪

拉撒路組：組長：Tony
副組長：慶坤
文書：紹文
財政：Tony、南萍
探訪：有燁、慶坤、南萍
小組長：有燁、南萍
關顧：麗芬、南萍
義工：潘麗芬
導師：吳煥鈴、梁夢熊

明亮組：組長：健明
副組長：超奇
文書：祖鈺
財政：超奇、琮鳳
靈修：文臬
探訪：超奇、美娟
關顧：文臬、美娟
小組長：祖鈺、文臬、琮鳳、美娟
康樂：祖鈺
義工：Janet, Raymond, Susanne
導師：梁夢熊

提摩太組：組長：愛蘭
副組長：鳳玲
文書：Alice
財政：惠娟
靈修：Alice
總務：家威、微微
小組長：家威、微微、惠娟
關顧：嘉恩、惠娟、愛蘭
義工：陳志華、關玉英
導師：陳靜嫻、陳金英

伯特利組：組長：國基
財政：紹華
文書：幺慧
靈修：鳳兒
聯絡：燕玲
義工：朱秀蓮、李玉蘭
導師：林達明

摩西組：組長：超勤
副組長：秋萍
文書：關謙
財政：關謙、偉光
靈修：顏俊、麗貞
探訪：秋萍、麗貞、漢良
康樂：綺梅、翠琮
小組長：玉蓮、秋萍、麗貞、佩雯
關顧：燕環、玉蓮、漢良、顏俊
義工：李慧德
導師：張慧英、梁夢熊

約翰組：組長：國喜
總務：家駒
康樂：志順
聯絡：偉明
司琴：金木
義工：周燕
導師：林桂明、司徒永裕、陳創豐、鍾就彩

真情組：組長：靜茹
副組長：智勇
文書：淑玲、秉文
財政：寶鈴、國齊
靈修：志昌
探訪：秀全
總務：慶輝、秉文
小組長：智勇、慧中、積慧
聯絡：頌恩、靜茹
義工：曾麗珊、黃妙玲、周寶芳、湯碧江
導師：譚潔玲、劉麗蓉、王錦洪

平安組：組長：惠敏
副組長：楚成
文書：綺華、美琪
財政：綺華
靈修：笑蘭
探訪：麗娟、鳳欣、燕芳、志輝
總務：少傑、毅熹
康樂：明利
聯絡：明利、鳳欣、麗娟、楚成、蔚傑
關顧：David、蔚傑、Iscah、明利
義工：徐小玲、黃筱薇、曹綺湘
導師：陳金英

約瑟姐：導師：劉景君、何志宏

青少年姐：財政：堯輝
小組長：駿駒、信成、樂人
義工：Bag、志華
導師：陳偉翰、林達明

以馬內利組：組長：德基
副組長：詠欣
文書：美惠、惠玲
財政：肖霞、詠欣、黃英
探訪：麗珊
小組長：黃英、麗珊、惠玲
關顧：黃英
義工：方蔡美惠
導師：Joyce、梁夢熊

約書亞組：組長：大衛
文書：楚珠
財政：楚珠
康樂：頌靈、心美、達榮
聯絡：頌靈、心美、達榮
關顧：健輝、大偉
義工：黃紫丹、張慕潔
導師：袁明基、古穎儀

家屬組：組長：林會真
文書：陳頌嫻
財政：陳金英、王麗芬
探訪：林會真、劉碧君、龍黛儀、劉日愛、王麗芬
聯絡：梁永慈、王麗芬、陳頌嫻、劉日愛、關玉英、劉碧君
關顧：梁永慈、王麗芬、陳頌嫻、劉日愛、關玉英、劉碧君
義工：關玉英、黃秀芬
導師：梁永慈、梁王麗芬、陳金英

以利亞組：組長：沛祺
財政：沛祺
靈修：佩珊
聯絡：小燕
義工：吳詠詩
導師：林達明

隱基底組：組長：耀明
文書：仲儀
財政：顯佑、彩愛
靈修：彩愛
探訪：劍偉
總務：顯佑
康樂：寶義
聯絡：劍偉、招蘭
關顧：彩愛、銘坤
義工：曾嘉賢, Rosanna
導師：王錦洪

東區組：義工：阮志華
導師：Florance、Eppie、梁夢熊

同工

執行幹事：梁夢熊先生
傳道幹事：陳金英姑娘
程序幹事：王錦洪先生
關顧幹事：林達明先生
文員：古穎儀小姐

2013/2014 Lists of Members

(The following members consisted of Oi Hip's group members, psychiatrists, psychiatric nurses, pastors, professors, occupational therapist, registered social workers, counselors and so on.)

ADVISERS

Dr. Mak Ki Yan
Dr. Chan Chee Hung

Dr. Hong Kwai Wah
Rev. Ng Ping Wah

Chun Kui, Yau Chiu Kay, Lau Kwok Wai,
Yuen Ha, Joe Shek, Fung Kim Wai,
Lam Tat Ming

BOARD OF DIRECTORS

Chairman : Dr. Luk Leung
Vice Chairman : Ms Lau King Kwan, Ms Leung Mei Kuen
Secretary : Ms Li Kam Ho
Treasurer : Ms Yung Fung Ling, Ms Wong Yee Wah
Committee : Ms Lam Wui Chun, Mr. Cheung Chiu Kan
Dr. Liu Kwong Sun

CHAPLAIN

Rev. Chan Yut Wah

SUB-COMMITTEE

Personnel

Convenor : Luk Leung
Committee : Lau King Kwan, Liu Kwong Sun

Education & Promotion

Convenor : Yung Fung Ling
Committee : Cheung Chiu Kan, Philip Wong
Ann Wong, James Ngan, C. H. Chan
Tony Tong, So Lai Ching, Wong Yee Wah
Chan Kam Ying, Leung Mung Hung

Counseling

Convenor : Lau King Kwan
Committee : Liu Kwong Sun, Lau Lai Yung, Luk Leung,
Tse Shu Ki, Kwok Chor Hon,
Wong Wai Shun, Chan Kam Ying,
Wong Kam Hung, Lam Tat Ming,
Leung Mung Hung

Volunteer

Convenor : Leung Mei Kuen
Committee : Yau Chiu Kay, Wong Kwok Chai,
Ann Wong, Wong Chi Yung, Philip Wong
Chung Siu Wah, Wong Lok Yan,
Chan Sung Wing, Ka Fuk Lung,
Leung Pui Kee, Wong Kam Hung
Koo Wing Yee, Leung Mung Hung

Resource Centre

Convenor : Wong Chung Bao
Committee : Wong Yee Wah, Philip Wong, Ann Wong,
Yau Chiu Kay, Leung Mei Kuen, Tony Tong,
Lau Kwok Wai, Wong Chi Yung,
Fung Kim Wai, Koo Wing Yee,
Wong Kam Hung, Leung Mung Hung

Pastoral Care

Convenor : Chan Yut Wah
Committee : Chan Choi Ha, Li Kam Ho,
Choi Chi Shing, C.H. Chan,
Koo Wing Yee, Chan Kam Ying,
Lam Tat Ming, Leung Mung Hung

Visit

Convenor : Yip Chui Ning
Committee : Lam Wui Chun, Fan Chau Ping,
James Ngan, Ann Wong, Philip Wong,

Five loaves Two fish

Convenor : Leung Mei Kuen
Committee : Chiu Man Yin, Ka Fuk Lung, Lo Man Ho,
Joanna Tsui, Wong Kam Hung,
Chan Kam Ying, Lam Tat Ming
Leung Mung Hung

GROUP COUNSELLORS

Caleb Group

Group leader : Hiu Wah
Vice group leader : Kwok Chung
Secretary : Fau Yeung
Treasurer : Chau Wan
Spiritual carer : Hiu Wah
Liaison member : Wing Fai, Kwong Ming, Fung Ping
Visitor : Hon Chung, Sau Chai
Activity planner : Kwok Chung
General services : Sau Chai, Wing Fai, Hon Chung
Small group leader : Chau Wan, Kwong Ming, Li Kee
Volunteer : Daisy
Counselor : Wong Wang Kuen, Jimmy, Cathy,
Wong Kam Hung

Lazarus Group

Group leader : Tony
Vice group leader : Hing Kwan
Secretary : Siu Man
Treasurer : Tony, Nam Ping
Visitor : Yui Ming, Hing Kwan, Nam Ping
Small group leader : Yau Shim, Nam Ping
Carer : Lai Fun, Nam Ping
Volunteer : Poon Lai Fun
Counselor : Ng Woon Ling, Leung Mung Hung

Brightness Group

Group leader : Kin Ming
Vice group leader : Chiu Kay
Secretary : Peter
Treasurer : Chiu Kay, King Fung
Spiritual carer : Philip
Visitor : Chiu Kay, Mei Kuen
Carer : Philip, Mei Kuen
Small group leader : Peter, Philip, King Fung, Mei Kuen
Activity planner : Peter
Volunteer : Janet, Raymond, Susanne
Counselor : Leung Mung Hung

Timothy Group

Group leader : Grace
Vice group leader : Fung Ling
Secretary : Alice
Treasurer : Wai Kuen
Spiritual Carer : Alice
General services : Ka Wai, Vee Vee
Small group leader : Ka Wai, Vee Vee, Wai Kuen
Carer : Ka Yan, Wai Kuen, Grace
Volunteer : Chan Chi Wah, Kwan Yuk Ying
Counselor : Patty Chan, Chan Kam Ying

Bethel Group

Group leader Kwok Ki
Treasurer Siu Wah
Secretary Kwok Wai
Spiritual carer Fung Yee
Liaison member Yin Ling
Volunteer Chu Sau Lin, Lee Yuk Lan
Counselor Lam Tat Ming

Moses Group

Group leader Chiu Kan
Vice group leader Chau Ping
Secretary Kwan Him
Treasurer Kwan Him, Wai Kong
Spiritual carer James, Lai Ching
Visitor Chau Ping, Lai Ching, Hon Leung
Activity planner Yee Mui, Chui King
Small group leader Yuk Lin, Chau Ping, Lai Ching, Pui Man
Carer Yin Wan, Yuk Lin, Hon Leung, James
Volunteer Lee Wai Tak
Counselor Cheung Wai Ying, Leung Mung Hung

John Group

Group leader Kwok Hay
General services Ka Kui
Activity planner Chi Shun
Liaison member Wai Ming
Pianist Kam Muk
Volunteer Chow Yin
Counselor Lam Kwai Ming, Szeto Wing Yu,
Chan Chong Fung, Chung Chau Choi

Sincere Group

Group leader Ching Yue
Vice group leader Chi Yung
Secretary Suk Ling, Ping Man
Treasurer Po Ling, Kwok Chai
Spiritual carer Chi Cheong
Visitor Sau Chuen
General services Hing Fai, Ping Man
Small group leader Chi Yung, Wai Chung, Jack
Liaison member Chung Yan, Ching Yue
Volunteer Tsang Lai San, Wong Miu Ling,
Chow Po Fong, Tong Pi Kong
Counselor Tam Kit Ling, Lau Lai Yung, Wong Kam Hung

Peace Group

Group leader Wai Man
Vice group leader Chor Shing
Secretary Yee Wah, Mei Ki
Treasurer Yee Wah
Spiritual carer Karen
Visitor Lai Kuen, Fung Yan, Yin Fong, Chi Fai
General services Siu Kit, Ngai Hei
Activity planner Ming Li
Liaison member Ming Li, Fung Yan, Lai Kuen, Chor Shing,
Wai Kit
Carer David, Wai Kit, Iscah, Ming Li
Volunteer Tsui Siu Ling, Wong Siu Mei,
Cho Yee Sheung
Counselor Chan Kam Ying

Joseph Group

Counselor Lau King Kwan, Ho Chi Wan

Youth Group

Treasurer Yue Fai
Small group leader Chun Kui, Shun Shing, Lok Yan
Volunteer Bag, Chi Wah
Counselor John, Lam Tat Ming

Emmanuel Group

Group leader Tak Kay
Vice group leader Wing Yun
Secretary Mei Wai, Wai Ling
Treasurer Chiu Ha, Wing Yun, Wong Ying
Visitor Lai San
Small group leader Wong Ying, Lai San, Wai Ling
Carer Wong Ying
Volunteer Fong Choi Mei Wai
Counselor Joyce Cheng, Leung Mung Hung

Joshua Group

Group leader David
Secretary Chor Chu
Treasurer Chor Chu
Activity planner Joe, Sum Mei, Tat Wing
Liaison member Joe, Sum Mei, Tat Wing
Carer Kin Fai, David
Volunteer Wong Tsz Tan, Cheung Mo Kit
Counselor Yuen Ming Kee, Koo Wing Yee

Relative Group

Group leader Lam Wui Chun
Secretary Chan Chun Han
Treasurer Chan Kam Ying, Wong Lai Fun
Visitor Lam Wui Chun, Lau Ping Kwan,
Lung Toi Yee, Lau Yet Oi, Wong Lai Fun
Liaison member Leung Wing Tsz, Wong Lai Fun,
Chan Chun Han, Lau Yet Oi,
Kwan Yuk Ying, Lau Ping Kwan
Carer Leung Wing Tsz, Wong Lai Fun,
Chan Chun Han, Lau Yet Oi,
Kwan Yuk Ying, Lau Ping Kwan
Volunteer Kwan Yuk Ying, Wong Sau Fun
Counselor Leung Wing Tsz, Leung Wong Lai Fun,
Chan Kam Ying

Elijah Group

Group leader Pui Kai
Treasurer Pui Kai
Spiritual carer Pui San
Liaison member Siu Yin
Volunteer Ng Wing Sze
Counselor Lam Tat Ming

En-Gedi Group

Group leader Yiu Ming
Secretary Chung Yee
Treasurer Him Yau, Choi Oi
Spiritual carer Choi Oi
Visitor Kim Wai
General services Him Yau
Activity planner Po Yee
Liaison member Kim Wai, Chiu Lan
Carer Choi Oi, Ming Kwan
Volunteer Tsang Ka Yin, Rosanna
Counselor Wong Kam Hung

HK Island East Group

Volunteer Yuen Chi Wah
Counselor Florance, Eppie, Leung Mung Hung

LIST OF STAFF

Executive Officer : Mr. Leung Mung Hung
Pastor : Ms. Chan Kam Ying
Program Officer : Mr. Wong Kam Hung
Counselor : Mr. Lam Tat Ming
Clerk : Ms. Koo Wing Yee



From the Chairman

Dr. LUK Leung

From the year 2013 to 2014, under the care of God and the commitment of our staff and volunteers, we have continual new expansion of services. A brief report is as follows:

陸亮博士

2013至2014年度蒙上帝看顧，同工及義工們的委身，團契不斷有新的擴展，茲簡報如下：

I. 小組方面

全年約有50位新人轉介入組。已開展二個新組：隱基底組已於紅磡豐盛生命堂2013年3月正式成立，而港島東區小組亦於2014年2月假中華基督教會柴灣堂之青年廣場柴房成立。

II. 栽培方面

領袖師徒門訓班計劃：延續去年計劃，仍然由4位同工帶領有心志的小組職員，開辦了5個領袖門訓班，共有40位小組職員參與，約每兩個月聚會一次。

III. 推廣方面

推廣精神健康教育：一年舉辦在3個不同地區各舉辦1次公開講座，並推介愛協事工。「性格障礙」在水圍區舉辦；「愛中重生：精神病患的復元」，與3個機構一起合辦，在城市大學演講廳舉行，屬全港性；「亞健康—身心情緒的醒覺」在柴灣區舉辦；各講座的反應不錯，尤以愛中重生：精神病患的復元的講座，事後還把當中的內容輯錄成書，讓愛協組員見證和靈性關顧方法以供讀者參考。

IV. 宣教方面

城市宣教—精神健康事工計劃：編制精神健康城市宣教資料，內容有精神復康之城市宣教、如何向精神病患傳福音、探訪教會交流計劃以及精神復康事工短宣課程和計劃等，今年我們將會向深水埗區教會推廣此事工計劃。

V. 行政方面

今年我們透過輔導組會議，修訂了當小組義工的要求：無論是康復者及非康復者完成義工實習後，若要加强加入小組服侍，會有1年適應期，之後才正式邀請他或她在小組當義工。

VI. 財政方面

團契收入來源分別為：金益金（33%）、社署（8%）、猶太人會堂基金（5%）、教會奉獻（7%）、弟兄姊妹（40%）、其他（7%）。因有6成收入不穩定，平均每年赤字24多萬元。去年7月開始同工面臨五折支薪，有一教會提供25萬貸款，故已補回欠薪。今年需要面對30萬大廈維修費，尚欠該教會25萬貸款。2014-15年度預算赤字\$193,330（預算收入中包括今年預計有40萬籌款）。

小組不斷的增加引證事工的需要。雖然財政緊拙，但深信厚賜萬物的上帝會按我們的需要給供應，讓我們一同仰望祂。

I. Groups

We have 50 new referrals this year. Two new groups have been established: one is at Hung Hum in March, 2013 and the other is at Chai Wan in February, 2014.

II. Nurturing

Leader mentoring discipleship project: continuing from last year, four staff are still leading the committed group committee members. Five classes of leader discipleship were held. We have totally 40 group committee members attending. A meeting is being held for them bi-monthly.

III. Promotion

Promotion of mental health education: we hold 3 seminars per year, once in 3 different district and promote the Fellowship at the same time. In Tin Shui Wai, we held the talk on "Personality Disorder"; With the cooperation of 3 other organizations, we organized the seminar on "Revival in love: the rehabilitation of mental illness" in Kowloon Tong; In Chai Wan, another talk on "Health-the awareness of emotion" was held. The talk was well received and edited as a book to record the witnesses of our group members and spiritual intervention.

IV. Mission

City mission – mental health ministry project: editing data for mental health city ministry including city ministry for mental health rehabilitation, sharing gospel with ex-mental patients, visiting churches and organizing short courses for mental health rehabilitation ministry etc. This year we are going to promote the project to churches in Shum Shu Po District.

V. Administration

After discussion in the counselling committee meeting, we have amended the criterion to be a group volunteer. After clinical practice, if they want to serve in a group, no matter they are ex-mental patients or not, have to attend the group for one year before officially invited as a group volunteer.

VI. Finance

The income of the Fellowship comes from: Community Chest (33%), Social Welfare Department (8%), Jewish Synagogue Foundation (5%), Churches (7%), Brothers & sisters in Christ (40%), others (7%). Because of the instability of the incomes, we have deficit about 240,000 dollars yearly. In July last year, staff only received half pay. One local church granted us the loan 250,000 so that we could repay our staff's salaries. This year we also have to pay 300,000 dollars for the renovation of the building. At present we also owe 250,000 dollars on loan from a local church. The budget for 2014-15 is estimated with a deficit of 193,330 dollars (including the expected 400,000 dollars from fund raising this year).

The growing number of groups is one of the evidences to show the needs of the ministry. Though we have a stricken finance, we still deeply believe our God will provide what we need. Let us look upon for his provision.

健康教育及推廣組

翁鳳玲

我加入推廣組差不多有六年了，衷心多謝推廣組成員的參與投入。推廣組成員各有不同恩賜：有的做網頁；有的在facebook；有的在文字表達；有的在教會網絡上；有的……（未能詳說）。恩賜會不斷發現，只有從事奉中發揮，多事奉多有恩賜。愛協是一個多機會發揮恩賜的好地方，也是建立人的地方。

每次推廣組開會，都會要以禱告為先，因為這是神的工作，要神帶領及交託，也是信心的交託，昔日為神重用的屬靈偉人都是同神有好的關係，在禱告上，付出許多時間安靜等候神。

都市人對精神病康復者不太熟悉，需要有推廣及教育讓人去認識。去年我們舉辦了三次公開講座，包括：「性格障礙」、「愛中重生：精神病患的復元」及「亞健康——身心情緒的醒覺」，合共534人參加。而「飛越迷牆」課程也正是對城市人溝通的大好機會，最難得的是在飛越迷牆的義工中，每年都有外界人士加入，證明有興趣又有心的人是有很多的，很值得極力推廣。去年共有84人參加課程，其中16人參加義工訓練，經過半年實習後有8人願意留在小組當義工。

今年雖然我離開了九年熟悉的工作機構，要重新找新工作，當中也遇了不少困難及適應，但在難處中往主更依靠天父，更知道及接受個人的限制，在小組中彼此分擔。以下我想分享我所愛的禱文：

祈求上天父，

賜予我平靜的心，接受不可改變的事；

給我勇氣，改變可以改變的事；

並賜予我，分辨兩者的智慧。



Mental Health Education and Promotion Committee

Yung Fung Ling

I have joined Promotion Group for around 6 years. I sincerely thanks for the participation of the Promotion Group members. Promotion Group members have different gifts from God. Some make webpage, some are good at facebook, some communicate well non-verbally, some develop church network, and some..... (even more). Gift from God has been discovered continuously. It can be used in ministry. The more ministry we do, the more grace from God we have. Oi Hip is a good place where we develop our gifts from God and establish mankind.

We start with prayer in every meeting of Promotion Group, because it's God's work. We entrust God to his leading. It's also the entrust of confidence. In the past, the spiritual great man, who God valued, had built good relationship with God. In prayer, they spend much time in listening to God silently.

Metropolitans people are not familiar with Mentally ill people. It's necessary to have promotion and education to make people understand. Last year, we held three public seminar, including Personality Disorder, Restart with Love: Rehabilitation of Mental illness and Sub-health - Awareness of Physically and Mentally Emotion. There's 534 participants. Besides, "Overcoming bewilderment" course is also a good opportunity for metropolitans people's communication. It's rare that some of the "Overcoming bewilderment" volunteers come from the outsider every year. It proves that there's many people with interest and helping heart. It's valuable for heavy promotion. Last year, there's 84 participants to join the course, where 16 people joined the volunteer training. After half a year internship, there's 8 people who have been willing to become volunteers in fellowship.

Although I left nine years familiar working organization this year, and face many difficulties in looking for new job, I rely on God when facing challenge, realize and accept own limitation, and share in fellowship. Below I would like to share my favourite prayer. (The Serenity Prayer by Reinhold Niebuhr):

God, Grant me the serenity to accept the things I cannot change;

The courage to change the things I can;

And the wisdom to know the difference.



小組及輔導組

Group and Counseling Committee

Lau King Kwan

We thank our Lord for having Ms Stephanie Wong and Dr. Tse Shu Ki joining the Counselling Committee. We explore the challenges faced by our group members in different perspectives. Through sharing and discussion, we gain insights on strategies to their problems. We assist the group members to handle their challenges and achieve personal growth.

With the support and encouragement of the group counselors, volunteers and staff, we hope that our group members will cultivate a spirit of self-help with mutual assistance. They will attain personal and spiritual advancement.

劉景君

感謝神為輔導組預備新成員，黃慧純姊妹和謝樹基博士的加入，讓我們能多角度地探討組員面對的困擾，商討、分享和交流應對方法，更適切地協助組員面對挑戰，與他們一起成長。

期望導師、義工、同工的支持和鼓勵，每位組員都能發揮助人自助的精神，彼此在信仰和生活上一起邁進。





義工組

梁美娟

感謝神的帶領及保守，讓我們能參與以下的活動：探訪明愛精神健康社區中心——全樂軒、親恩頌暨生日會、打保齡球、探訪基德復康中心、精神健康法律講座——病人權益及法律保護、外展探訪善導會精神健康社區中心——龍證坊、放風箏、遠足、生活營、東涌白芙蓉山、探訪浸信會愛群精神健康綜合社區中心（港島區）、探訪長沙灣基道堂失聰團契、初四培靈會暨團拜旅遊、義工交流會、賣旗活動及海洋公園一天遊等等……

感激義工們的委身與幫助，讓以上的活動能一一順利進行。願神繼續看顧及施恩給他們，讓他們能在愛協的大家庭中不斷地學習與成長。

Volunteer Committee

Fion

With God's guidance and offerings, we can participate in various activities include Visiting Caritas Wellness Link Tsuen Wan, Birthday Party of Thanksgiving to Relatives, Bowling, Visiting Kei Tak Rehabilitation Home, Mental Health Legal Seminar (Patients' Rights and Legal Protection), Outreach Visiting The Society of Rehabilitation and Crime Prevention, Hong Kong Vitality Place, Flying Kite, Hiking, Mental Health Camp, Hiking of Tung Chung Bai Fu, Visiting Baptist Oi Kwan Social Service Integrated Community Centre for Mental Wellness (HK East), Visiting Hearing Impaired Fellowship of Cheung Sha Wan Kei To Church, Christian Ministry and Christian Oi Hip Fellowship Tour in the fourth day of Lunar New Year, Volunteers Sharing Session, Flag Selling and Ocean Park Day Trip, etc.

We sincerely appreciate the giving and assistance of the volunteers, which smoothen the above activities. Hope God continues looking after and offering grace to them, to let them continuously learn and grow in the big family of Oi Hip.



Resource Centre Committee

資源中心組

黃宗保

感謝神，在祂的恩典及帶領下，資源中心有新的當值員加入服侍的工作，期望有更多組員願意加入當值的工作。

今年首次推行組員投稿愛協通訊，共有5人投稿獲接納刊登於通訊之中，並獲贈書券鼓勵。繼續往年書籍和影音推介及新書介紹，共有15個小組參與推介，使更多有需要的組員得到幫助。今年在7月份舉行書籍及影音分享會，讓組員有機會互相分享曾看過的書籍及影音項目，鼓勵弟兄姊妹多看書籍及影音項目，共有13人參加。今年申請公益金撥款更換書櫃，已獲批准，求神保守購買及更換過程可以順利進行。

願神繼續使用資源中心成為更多人的祝福，期望同工及義工的事奉能合一將福音帶到有需要的人中。

Wong Chung Bao

Thank to God. New group members joined the voluntary services. The development of Resource Centre was in God's grace and guidance.

This year, we encourage group members to submit articles to Oi Hip Newsletter. There are five group members submit the articles. We continued our reading share project and the book introduction scheme in order to serve the needy members. Fifteen groups participated the book introduction scheme. We also organized a book and media sharing session in July. Thirteen group members participated and have books and media sharing. Our application of Community Chest funding to replace the book shelves have been approved.

May God use the Resource Centre to bless more people. I hope colleagues and volunteers work together in the future.

靈牧組



陳一華牧師

為了推動組員多做運動，靈牧組去年推行每月兩次讚美操活動，藉舞蹈操幫助組員改善因藥物帶來身體僵硬的副作用及身體平行的協調，又可透過讚美操的歌詞讚美神。在此感謝讚美操事工協會的幫助，每次派出義工教導組員跳讚美操。除讚美操外，靈牧組還預備了不同的聚會和活動，牧養組員的靈命，其中包括：

1. 推行靈修分享及背金句：推動小組舉辦靈修計劃及安排週會分享，鼓勵組員多做靈修，與神建立美好關係。另每月提供金句給小組背誦，讓組員對神的話語有更多認識和記存。
2. 信仰栽培指引：我們以「迎接主再來」為題編制了四課查經資料，讓組員明白耶穌再來是必然的事，提醒大家要警醒生活。
3. 領袖門訓查經班及退修營：由四位同工帶領各小組職員查考「腓立比書——僕人的生命與事奉」，學習保羅事奉的心志，提升他們事奉的質素。並於12月期間舉辦兩日一夜的「領袖門訓」退修營，讓各小組職員有更多時間彼此認識，學習與不同的人相處溝通及順服的功課。
4. 學習傳福音事奉：去年共舉辦了三次醫院探訪活動，分別是與葵涌醫院、東區尤德夫人那打素醫院及聯合醫院院牧部合辦的院友聚會。還有在12月20日與宣道會基蔭堂合辦「情緒解毒，聖誕飯局」聖誕聯歡福音晚會；12月23日在西九龍中心及長沙灣附近的街頭報佳音，讓組員實踐傳揚福音的大使命。
5. 其他活動：詩班，去年他們除了在23周年感恩會獻詩外，還在三位組員的安息禮拜中獻詩。此外，初三團拜及培靈會請了柴樹良牧師分享信息，帶給員很多鼓勵。另每兩個月一次的雙月禱會，與組員分享不同的專題訊息，藉此提醒和教導。而協助組員融入教會，更是我們持續的事工計劃。願神祝福和使用，讓愛協與教會有更多合作空間，幫助組員融入教會的生活。

Pastoral Care Committee

Rev. Chan Yut Wah

In order to push group members to do more physical exercise, the Pastoral Care Committee organized Praise Dance lessons twice a month last year. Through dancing and exercising, the side-effect of bodily rigidity caused by medication was decreased, and the whole body became more well-balanced. Besides, the lyrics of the songs used in dancing have helped group members to praise God. Thanks to the Praise Dance Association for providing volunteers to teach in the lessons. The Pastoral Care Committee have also organized other meetings and programs to nurture group members' spiritual life. They included:

1. Sharing of devotional insights and memorizing bible verses: Encourage all groups to have devotional programs and sharing of devotional insights in group meetings, thus help group members to practice devotions and to build up good relations with God. A bible verse was given to all groups to be memorized each month, so to help group members to know more and remember more of God's word.
2. Faith nurturing guides: A set of four lesson bible study materials were prepared for the groups, with "Preparing for the Second Advent of the Lord" as the main theme, so as to help group members to understand that it is a fact that Jesus will surely come again, that they should stay alert.
3. Discipleship bible study class and retreat camp for leaders: Four Oi Hip co-workers led group committee members to study the book "Phillipians-Life and Ministry of Servant/Friend, to learn from Paul the attitude of serving, to improve their quality of serving. A two day overnight discipleship retreat camp for leaders was held in December, to help group committee members to know one another, and to learn the lessons of communicating with different people and obeying one another.
4. Participation in the ministry of evangelization: Three hospital visits were held last year. They were patient meetings organized with the pastoral care units of the Kwai Chung Hospital, the Pamela Youde Nethersole Eastern Hospital and the Union Christian Hospital respectively. There was also the gospel dinner Christmas gathering held on 20 December, organized with Kei Yam Alliance Church, with "detoxification of emotions, dinner gathering at Christmas" as the topic. And there was also the Christmas carols singing at Kowloon West Centre and in the street of Cheung Sha Wan. It was an occasion for group members to practice the Great Mission.
5. Other activities: The choir sang in the 23rd Anniversary Thanksgiving Service, and offered praises in three funeral services of group members. The revival meeting held on the third day of Chinese New Year had Rev. Chai S. L., Paul as speaker, bringing much encouragement to group members. The bi-monthly prayer meetings reminded and taught group members with messages on different topics. And helping group members to stay in church is our continuous program of ministry. May God bless it and use it, allowing more room of cooperation between Oi Hip and the churches, and help group members to become more involved in church life.



探訪組

葉翠寧

探訪組旨在透過策劃推動醫院、宿舍及家庭探訪的關愛行動，實踐『愛協』關顧組員、及康復者家屬的需要。感謝神，在「探訪事工委員會」中，來自各小組的探訪員的成員，在探訪事工的計劃，實務及跟進探訪事工上，都提供不少意見，和分擔了當中的跨組探訪。

除此以外，我們提供交流平台和訓練予探訪員。分別在4月和11月舉辦「探訪交流分享會」，讓愛協的探訪員能彼此分享、交流心得及增進探訪技巧，更讓關顧者及被關顧者同得生命造就，分別有17和14人參加。其中，在去年十一月的分享會後，更輯錄與會者對被探訪時的期望成為單張供組員參巧。而在去年8月舉辦的「探訪技巧訓練班：溝通技巧」中，我們訓練組員認識探訪時的溝通技巧，共15人參加。

另我們開始分析上年收回的「探訪記錄」內的檢討欄，望能推動更有效之探訪事工；並繼續使用「組員住院記錄」策劃適切的探訪行動。

Visit Committee

Olivia Yip

The visit committee committed to care for Oi Hip's group members and their families through home visits and hospital visits. Thank God members from Oi Hip Groups contribute their efforts in planning and operation of the visit ministry. Actually, they share the cross group visits.

Meanwhile, we provided platform for sharing and training to members. Through organizing sharing seminars in last Apr and Nov, members shared their experiences and enhance skills of visit. Number attendance were 17 & 14 respectively. Last Nov, a pamphlet on summarizing their sharing on expectation to the visitors was published. Besides, a "Workshop for Skills of Visit -Communication Skills" was held last Aug to train members on communication skills. The numbers of attendance was 15.

Further, we started to analyze the revised "Visit Record", aiming at more effective visit ministry; and continued to use the "Group Members' Hospitalization Record" for planning of visits.



迦勒組

曉樺 (組長)

小組今年繼續有導師Jessie、Derek、新導師Jimmy和Cathy，與義工Daisy，多謝他們幾位在過去一年帶領團契和對組員的關懷。

迦勒組每次聚會都有十一、二位組員參加，女組員返小組的次數也多了，每次的周會，不論是專題、分享、探訪或生日周，我們在當中也很享受。一同的分享和學習。

過去一年，我們有三位組員的父母返了天家，也成為我們的衝擊，亦有在工作 and 家庭人際關係上發生不愉快的事情，希望靠著神的恩典和憐憫，使我們從困境中走出來，亦希望組員一同在聖經的真理上追求，使我們都有神所賜的力量行走天國的道路，所說所做都蒙神的喜悅。

拉撒路組

Tony (組長)

回顧過往一年，出席小組聚會的人數不穩定。現在約8-9位組員(不計導師和義工)參加。其中，有些組員覺得小組欠缺吸引力；又有組員因為精神和情緒都欠佳，而減少返小組；有些組員因為工作、學習、藥物副作用和間中要照顧家人而未能恆常返小組。此外，小組有一位組員剛剛離世，希望他能在主的懷裡安息。

但感謝主！小組來了一位男義工扶助組員成長。不過，他現正尋找主為他預備的路向。但願他尋找到，並行在神的旨意裡。再感謝主！職員會由2013年的4位職員增至2014年的5位職員。小組也來了兩位新朋友。

話又說回來，應如何面對組員和新朋友的流失呢？也許，我們要加強對他們關懷的力度。同時在小組探訪上積極推行。在禱告上記念及仰望主。最重要的還是愛心上的關懷。此外，小組在這個年度內，舉行了兩次生日周暨外出用膳。大家都參與踴躍。

最後，我們都深信上帝昔日看顧著我們，今日仍是，將來也是！但願榮耀頌讚都歸給祂！

Caleb Group

Hui Wah (Group Leader)

This year the group continues to have Counselors Jessie and Derek, new Counselors Jimmy and Cathy, and volunteer Daisy. Thanks them for leading the fellowship and concerning the members in the past year.

Caleb Group has eleven to twelve members to participate in each meeting. The number of female members has returned to the group frequently. We also enjoyed every weekly meetings, no matter the topic, sharing, visits or birthday week. We share and learn together.

Over the past year, three members' parents have returned to heaven, which became our shock. More, unpleasant things have also been happened in the work and family relationships. I hope with God's grace and mercy, we can walk through the predicament. And I hope the members can work together in pursuit of the truth of the Bible, so that we have a God-given strength to walk the road to heaven, and fulfill God's will in our conversation and behavior.



Lazarus Group

Tony (Group Leader)

Looking back the previous year, there's unstable number of attending fellowship. Now, there's around eight to nine group members (exclude tutor and volunteer) to join. Some members think fellowship lack attraction; while some are reducing the frequency to back fellowship because of poor condition of metal and emotional status; and some cannot stability to back fellowship because of work, study, side effect of medication and taking care of family sometimes. Besides, one group member of the fellowship has passed away. Hope he can be rest peacefully in God.

However, thanks God! A male volunteer come to the group and help group member to grow. But, he's now finding a path prepared by God. Hope he can find it and live in the wisdom of God. Thanks God again! There're four committee members in 2013 increasing to five members in 2014 in committee group. The fellowship has attract two new comers as well.

By the way, how can we face the lost of group member and new friends? Perhaps, we need to reinforce the concern to them. Also, actively have visit in group will do. Memories and look for God in prayer. The most important is caring with love. More, our group held two birthday weeks with dining outside in this year. We all actively participate.

Lastly, we strongly believe God keep us in the past, recent and future as well. May the glory of God belong to him.

明亮組

鄭健明（組長）

本小組於本年度仍有不少新成員加入，令本小組的人數仍有大幅度的增長，可惜，願意投身於本小組不同事奉崗位的組員仍不足夠，令本小組的運作稍有阻滯，不少新組員未能從本小組的活動中得到益處，本小組的職員會主要由舊組員組成，故未能為小組帶來新思維，我們正在學習新的事奉方式，令本小組的運作不斷進步。



提摩太組

譚愛蘭（組長）

轉瞬間，我參加愛協團契提摩太組已十九年了，而擔任組長一職也前後做了三次，每次由一年至四年不等，還做過財政、聯絡及小組組長等職，可真是個資深的組員及職員。

最初的時候，我們是在旺角花園街一教會聚會，後因教會裝修後有新事工開展，未能再借地方給我們，我們只好暫時返回愛協會址聚會，轉眼間也聚會了年多兩年。希望遲些可以在油尖旺區再找到聚會的地方，方便該區的康復者參加。

現時除了陳姑娘傳道做導師外，還有Patty、Josephine及Alfred三位義工做導師，很多謝她們的指導及幫助。組員原是男女各半，現在則是女組員佔多數，但也不失我們聚會的質素。

現時我們除了平時每兩週一次的專題及生活分享外，我們組員也有相約出來茶聚及唱K呢！此外，近年很多組員都因工作關係，未能次次都出席聚會，但我們也有打電話關心他們的近況，和他們保持聯絡。有時也有舊組員參加我們的聚會，如吃團年飯等。

最近愛協團契也有跨組活動，如門徒培訓及聚會等。我們也有和平安組的組員一起查經，也有和其他組的組員打保齡球及宿營等，這些也增添我們聚會的多元化及樂趣。

最後，希望愛協團契的組員人數不斷增加，會務蒸蒸日上，令更多人知道康復者的情況及使我們更獨立。願神不斷保守，感謝神！



Brightness Group

Ezekiel (Group Leader)

The number of group members of this group is continuously increasing because of more new members joining this group. But, few members are willing to be a member of staff of this group to bear the responsibilities of caring the ex-mentally ill.

This group does not have more motion and new thinking to promote the development of this group and these circumstances cause some new members cannot get many advantages from this group. The staff is learning the new method of managing this group.

Timoth Group

Grace Tam (Group Leader)

Time flies, I have joined Oi Hip Fellowship Timothy Group for 19 years and acted as group leader for three times, in which I worked for one to four years. I have worked for finance, liaison and group leader. I can be regarded as an experienced group member and committee.

At first, we have fellowship at a church at Mong Kok Fa Yuen Street. But later the church has new ministry after renovation. It can't lend place for us. We can only back to Oi Hip office for fellowship. Time flies, we have had fellowship for one to two years. Hope we can find a place for fellowship in Yau Tsim Mong District soon, to facilitate the rehabilitated people in this district.

Now, other than Pastor Chan being tutor, we have three volunteers: Patty, Josephine and Alfred to become tutors. Thanks for their guidance and help. Members are half male and female respectively. Now the female group members are majority. But we won't lose our fellowship quality.

Besides one feature and life sharing every two weeks now, group members also meet for gathering and singing karaoke. Besides, recently many group members cannot attend every fellowship because of work. But I give them calls to concern about their status and keep good contact with them. Sometimes, there's old members joining our meeting, like have gathering meal.

Recently, there's intra activities in Oi Hip Fellowship, including the disciples training and fellowship, etc. We also have bible study with Peace Group together. And we play bowling and go camping with other group members. They all make our fellowship be various and joyful.

Lastly, hope the number of Oi Hip Fellowship group members can be increased and every success of Oi Hip, to let people understand the rehabilitated people's status and make us more independent. Hope God keep us continuously. Thanks God!



伯特利組

劉楓慧 (文書)

過去一年伯特利組的聚會，人數尚算穩定，每次也約有5-7人出席。去年頭大半年有1名同工、兩名義工在小組服務，近年底前有一名義工另有其他機構的事奉，無可奈何地暫停小組的服務。至於組員人數方面，年中一名女組員因與其他成員相處出現誤會而退出，本年初則有一名新的女康復者願意融合。

小組聚會主題內容，一般以生活分享/主題/生日會...為主，組員均積極參與。

Bethel Group

Iris (Secretary)

In the past year, there's no big change of Bethel Group. There's female group member willing to stably attend fellowship. However, few members stopped participation because of misunderstanding. And there's (飛越迷牆) graduates acting as practicing volunteer. But due to family reason, he can't finish the practicing period. This early year, we have two new friends. Although they still can't become formal member, we thank God that there's increasing number of fellowship members.



摩西組

Moses Group

超勤 (組長)

摩西組在過去一年，出席人數仍然保持超過二十五人，是一個好現象，我們聚在一起，有分享，有生日愛宴，有專題訊息，充滿了歡樂的氣氛也有一個健康專題，介紹了一些方法，教我們養成良好的飲食習慣，生活健康。摩西組有導師梁生、義工Gracie，他們讓我們有足夠的空間，可自由參與小組內的各項活動，給予我們支援及愛心。職員會有十二人，都是積極參與的，我們無論在開會時，或在摩西組聚會時段，都相處融洽，是摩西組的忠心成員。各組員出席穩定，也常有新人來到，他們都很投入，常在聚會中分享。我們會關心新來的組員，讓他們感到接納與支持，這是我們摩西組的任務。

Chiu Kan (Group Leader)

Last year, Moses Team have stable participants over 25 persons. This is a good news. We gather together having sharing, birthday meal, special message. There are full of joyful atmosphere within us. We also have a healthy meeting which introduce some methods so that we can have healthy diet and healthy lives. There is one instructor Mr. Leung and one Volunteer Gracie in Moses Team. They lead us and let us have sufficient space to participate freely all the activities in the Team. Give us support and love. Our staff committee have twelve persons. They all participate actively, no matter in meeting time or in gathering time. They all feel comfortable. They are faithful to Moses Team. In our team, members are attended in a stable manner. There are also many new comers. They all involved happily and always sharing in the meeting. We would take care of the new members and let them feel acceptance and support. This is the tasks of Moses Team.



John Group

Lam Kwai Ming (Counselor)

Thank God for giving us new group members in this year. The increase in female members made the sex ratio of the group more balanced. They enjoy the group activities each time. Various activities help them to know each other more. It also enriches their experience and enhances the strength of their relationship.

Group meetings emphasized life sharing and aimed at more understanding and support among group members. It gives them more chance to open up themselves, help them to build up self-confidence. As a counselor, I sometimes feel pressure but I just want to do my best to care for their needs, strengthen them to face reality everyday and feel satisfied.

We deeply believe when we are willing to serve God and group members, God's grace will surely be upon us, to enhance those broken in soul and mentally disabled to be accepted and appreciated. The group of Oi Hip Fellowship aims at serving these people because those accepted receive not their own compliment but God's compliment.

Mental illness would not affect people understanding gospel, discrimination would not affect the inflow of God's love.

林桂明 (導師)

感謝神，今年小組加添了一些新成員，當中女性組員也有增加，令小組的男女比例變得較為平均，她們漸漸也投入小組的聚會和活動中，同時也帶動其他組員更投入。他們很享受小組一起的活動，而多元化的活動有助小組組員互相瞭解，增進彼此關係和關心。

小組的功能，乃是提供多些渠道給予他們去傾訴，幫助他們去建立自信，希望幫助他們重投現實社會中。作為導師的我，有時也感到壓力和吃力，但心想只管努力去幫助和關顧他們的需要，使他們有力量在現實生活中過每一天，也就心滿意足了。

深信我們願意努力去事奉神及服侍小組成員的同時，神的恩典必然臨到我們身上，使那些心靈破碎及精神上有問題的群體，得蒙被接納和被欣賞，而愛協團契小組的存在，也就是等着去服侍他們了。

「思覺失調阻不住人去認識福音，歧視眼光擋不了神的愛！」

真情組

何靜茹 (組長)

我很幸運我是真情組的組員，因為有許多好的導師和義工，加上組員積極參與，互相扶持。今年有好幾位組員入院，我們的導師、義工和組員相繼探訪，以表支持和關心。

此外，我們都會一年四次往外吃生日飯。除了小組之外，導師和義工也會贊助，我們都開開心心，相處得融洽愉快。

2014年開始，導師 Florence 和 Eppie 及幾位組員相繼轉到東區小組參與和服侍。回想起和他們的時間，我們會有捨不得的心情。另外，他們雖然離開，但我們也會祝福他們有一個身心強健的體魄，有一個新開始。這都是神的恩典。但願我們真情組各人身體健康，活在主的愛中和懷中。



Sincere Group

Kasey (Group Leader)

I am very lucky to be the member of Sincere Group as there are many good counselors and volunteers. Also, the group members were involved and mutually supportive. This year, some group members had to admit to hospital for treatment. Our counselors, volunteers and group members expressed our concern and support to them through hospital visits.

With the sponsorship by our counselors, volunteers and group savings, we could have dinner outside for celebrating our birthday four times a year. Over the past one year, we related well and enjoyed our gatherings.

From 2014 onwards, Florence and Eppie, two of our counselors started a new group in the Eastern district. Though we all missed them, we appreciated their effort in serving members in another place and blessed them having good health and good work in the new group. This is the Amazing Grace of our Almighty God. Wish all the members in Sincere Group healthy livings in His love and care.

平安組

周楚成 (副組長)

平安組是愛協團契其中一個互助小組。透過小組聚會，大家學習互助、互愛，在信仰上互相支援。我最初返愛協原因都是為了支援同我一樣有過精神病的人。從屬靈眼光去看，精神病是神給予我的恩賜，以過來人的身份服侍組員，是神給機會我用來榮耀神。在小組有兩位組員加入了朋輩支援行列，一位已做了一年多，另一位正接受訓練，希望能激勵其他組員加入這學習行列。。

其實發生在人身上的所有遭遇，在上帝眼中看為是好的，有組員更設立一個平安組群組平台，透過智能手機WhatsApp互相聯繫，除很快知道組員近況狀態，也可以發揮互相代禱、慰問、互愛的精神，義工導師都有份加入，甚至從旁指導，就算沒有智能手機的組員，我透過SMS通知組員當日聚會的事奉剛位，做到我們更緊密連繫。身為副組長的我，很難以感性去表達自己去關心人，只能從理性客觀態度提出意見和鼓勵，希望組員體諒我的缺失。令我感言恩惠，是自從設立WhatsApp平台，每位組員、義工和導師都有權利表達感受和需要，在耶穌基督裡彼此支援，平安組是屬於大家參與的。

最後與大家分享一句：「要常常喜樂，不住的禱告，凡事謝恩；因為這是神在基督耶穌裡向你們所定的旨意。」（帖前五16-18）



黃樂人 (小組長)

今年是我擔任青少年組小組長的第一年，看見小組內恆常出席的組員持續上升，亦增添了不少新組員。當中，有些組員暫時不是基督徒及對信仰產生疑問，因此大家在小組的WhatsApp群組中有熱烈的討論。

而今年青少年組的專題聚會包括“職場人際關係”，“求職工作坊”，“復元概念”及“戀愛工作坊”等，非常切合青少年康復者的需要。展望未來，小組內會以「在神的愛中互相協助」的精神，組員們在復元路上並肩同行。



Peace Group

David Chow (Vice Group Leader)

Peace Group is one of the Group of Oi Hip Fellowship. Through the group meeting, we have learnt to help and love others, as well as mutual support in Christian faith. At first, I came to Oi Hip for supporting those mentally ill people like me. In spiritual thinking, mental illness is a gift from God. With my experience to serve members, it's an opportunity given by God to glory Him. There're two members joining friendship supporting committee. One has been already worked for more than one year. Another one is under training. Hope they can stimulate other group members to join this learning committee.

In fact, God regards as good for every things happening in people. A member even creates the Peace Group platform. We can communicate via smartphone whatsapp. We not only know the recent status of group members, but also pray, concern and love others. Volunteer tutor also join the platform and guide the members. For those not having smart phone, I inform them the ministry of the fellowship via SMS. We communicate intensively. Being a vice group leader, I'm difficult to care about others emotionally. I can only critically provide opinion and encouragement in the neutral manner. Hope group members can understand my missing. My thankful thing is after setting up the whatsapp platform, every group members, volunteers and tutors have the rights to express feelings and needs. We support each others in Jesus Christ. Peace Group invites all of us to participate.

Lastly, I'd like to share from bible: "Rejoice always, pray without ceasing, give thanks in all circumstances; for this is the will of God in Christ Jesus for you." (Thessalonians 5:16-18)

Youth Group

Lok Yan (Small Group Leader)

As a new small group leader, I am pleased to see the group is growing steady and some members even take up the position of core member. With the development of communication technology, our members have nice discussion in the "WhatsApp" group, especially for those not-yet Christian members, they are very curious about our religion.

The meetings in this year covered various topics catering the need for the young people, which include "inter-personal relationship in workplace", "workshop for job hunting", "restoration" and "love and relationship". In the coming future, the members will continue to help each other within God's love towards "restoration".



約瑟組

劉景君 (導師)

約瑟組在每月的第一和第三個星期五聚會，於南昌街新生會長期護理院舉行。小組出席人數約十五人，平均的出席率約百分之六十至七十。組員藉詩歌、查經及金句，加深對聖經的認識，他們也彼此分享及互相代求，一起在生活上實踐神的話語。

感謝南昌街新生會長期護理院的同工，協助安排場地和用具，社工同事的多方聯繫，使小組能繼續服侍長期護理院的舍友，滿足他們靈性上的需要，讓他們的屬靈生命可以更茁壯。

以馬內利組

梁夢熊 (導師)

今年，本小組受著很多方面的考驗。首先，新組長在履新之際，精神不妥，需要入院接受治療，途中曾嘗試過出院，但過了不久，又再入院，至今仍在醫院，但願天父上帝保守他，能早日康復，回巢歸隊，一起並肩作戰。此外，我們有兩位小組職員亦因一些個人的原因，請辭離開我們這個服侍的團隊，又有一位因為情緒及病徵的影響，需要請假半年，在家休養生息，讓體力和精神恢復過來。今年，我們親愛的嘉輝弟兄被主接去，安息在主的懷裡，不再受情緒和失眠的困擾了，我們每一位組員都很懷念他，但願天父安慰他的家人和每一位懷念他的肢體。

也許，小組面對上述種種的挑戰，我們仍然對上帝的依靠堅定有力，每次聚會之前，我們都有祈禱會，我們仍然彼此記念，互相代求，一起為小組和愛協同心守望。在此，我們多謝大埔浸信會的牧者和肢體，給予我們小組很大的幫助和支持，同時亦要多謝每一位組員、職員和導師，為主擺上，緊守崗位，同心協力，關懷我們這班康復者群體。求主繼續帥領我們，服侍這區的康復者，把福音傳到未信主的朋友，得著醫治、拯救和豐盛的生命，啊們！

Joseph Group

Lau King Kwan (Counselor)

Members of Joseph the cell group study the bible and pray together on the first and third Friday of every month in Nam Cheong Street Long Stay Care Home. There were about 15 members attending the group and the average attendance was about 60% to 70%. Members gain more understanding on the bible. They prayed and shared with each other. They learned to practice God's word in their daily living.

Thank for the kind assistance of the staff of Nam Cheong Street Long Stay Care Home. They helped to prepare the venue and equipment. Special thank is directed to the social worker who liaised with different parties. It is hoped that Joseph the cell group can continue to serve the residents of the long stay care home, meeting their spiritual needs and strengthen their spiritual lives.



Emmanuel Group

Stephen Leung (Counselor)

Last year, our group faced a lot of challenges. Firstly, our new group leader was admitted to hospital due to his unstable mental health. Although he was discharged from hospital in the meanwhile, he relapsed and was readmitted to hospital again. Up to now, he is still in the hospital. May God bless his recovery from the mental health and we hope that he will come back to our team to serve God together. Secondly, two committee members resigned their positions for personal reasons. Thirdly, one committee member's mental health was unstable. She took a sick leave for six months and stayed at home to recover her health. Our beloved brother, Ka Fai passed away, resting in peace in God's loving arms. He could release from the mental disturbance and insomnia. We all missed him. May God console his family members and all brothers and sisters.

Although our group faced the above challenges, we did believe our God. We still had our prayer meetings before group meetings. We prayed for each other and prayed for the group and the Oi Hip Fellowship. Right now, thank every group member, group committee members and counselors for their commitments in the service of the mentally ill. May God lead us to serve all mental patients in Tai Po. We deliver good news to the unbelievers and hope that they can recover from the mental illness and obtain the salvation and abundant life in Jesus Christ. Amen!



約書亞組

孫楚珠 (文書)

今年是愛協約書亞組成立十週年，感恩今年多咗好多新組員，大約全組有二十人，包括導師和義工。組員非常主動、願意分享。聚會內容有分享、查經、專題講座、戶外活動。大家的情況都穩定和正面。有時組員病發、轉工都願意分享，其他組員也彼此互相鼓勵和支持，實在感受到大家的慰藉和扶持。組裡也有許多組員未信主，但他們也渴求認識上帝。感恩上年十二月愛協和基蔭堂合辦佈道會，有許多組員報名參加，期盼他們每一個都接受福音，得着救恩。但願在精神康復路上有上帝、同行者一同並肩走這段康復之路。



家屬組

陳頌嫻 (義工)

日間和夜間的家屬組分別迎合了有不同時間需要的家屬們，他們都帶着同一需要而來到愛協——就是為了幫助家人，應該說是為了愛家人而來的。夜組穩定出席的李先生夫婦，他們因着女兒的緣故參加了聚會，每次唱詩、祈禱，查經，非信徒的李先生總是那麼投入。心裏想，李先生因著對女兒的那份愛，他願意投入這小組，是對女兒有幫助的一個小組。李先生這個心態，或者說這個盼望，同樣都在每一位家屬組組員心中存在着。

有時，看見家屬們為着兒女們的病況、情緒、工作等憂心，連家屬們自己的情緒也被牽制着，雖然他們當中也經歷過不少神的恩領，但困擾卻使他們忘記了那「盼望」是從「祂」而來的。彼得前書5:7「你們要將一切的憂慮卸給神，因為祂顧念你們」；尼希米記8:10「你們不要憂愁，因靠耶和華而得的喜樂是你們的力量」。祈求神讓家屬組各組員，無論處於任何境況，都緊記著神賜下的應許。阿們。

家屬組雖然每月只有一次聚會，但我們的內容也很多元化，包括有詩歌分享、DVD見證分享、專題查經、專題講座及經文分享等。而每次我們也有分組代禱時間，為患病家人的需要禱告。此外，我們也盼望藉著家訪，接觸組員患病的家人，從而關心他們，希望有一天能建立信任後，帶領他們進入社群，過復元的生活。

Joshua Group

Joshua Group (Secretary)

The group of Joshua in Oi Hip Fellowship has been established for 10 years. We give thanks to our God because the number of members in our group is increasing. We are now having 20 members including the volunteers and supervisors. The members are very active and willing to share. The contents of our meetings include life sharing, Bible study, Seminars on specific topics and outdoor activities. Our conditions are stable and positive. Even though some of us have mental relapse or change of occupation, we still eager to share with others. All the group members support and encourage each other. We really feel the comfort and support from other members in the group. Some of the members in the group are non-Christians but they are willing to know more about God. We had a gospel meeting jointly organized by Oi Hip Fellowship and Kei Yam Church in last December. Many members had joint the gospel meeting. We hope they trust in God and become parts of our family. We hope we can hand in hand and walk with God in going through this mental rehabilitation pathway.

Relative Group

Chan Chung Han (Volunteer)

Day time and evening time relative group respectively fulfill different time need of relatives. They go to Oi Hip with a same need of helping family members. It's also because they love their family members. Mr. & Mrs. Lee, who stably join the evening group, they come to the group because of their daughter. No matter singing hymn, prayer and bible study, Mr. Lee has enjoyed. I think Mr. Lee with his love of daughter, he is willing to enjoy the group. This group is beneficial to his daughter. Mr. Lee's mentality or hope, both has appeared in every relative group members.

Sometimes, I see relatives worry about their children's sickness, emotion and work. Emotion of relatives has also been affected. Although they have experienced many God's grace, difficulties let them forget the hope. It comes from Him. 1 Peter 5:7 Casting all your care upon him; for he careth for you. Nehemiah 8:10 Neither be ye grieved; for the joy of Jehovah is your strength. Pray Lord for all relative group members, in whether condition, remember what God offers promise. Amen.

Although there's only one fellowship every month for relative group, we have a variety of content, including hymn sharing, DVD testimony sharing, feature bible study, feature seminar and bible sharing, etc. Besides, every time we form group to pray for the need of patient relative. More, we hope to meet members' relatives who are ill with home visit. And with our concern and care, we hope to build mutual trust, bring them to the community and enjoy the rehabilitating life.

以利亞組



霍沛祺 (組長)

今年小組上半年曾經有很多組員參加聚會，試過有二十多位一起參與活動，一齊歡度生日週及各類活動，甚至有組員奉獻全隻乳豬，場面十分溫馨熱鬧及歡愉。有時為了買活動所需物品，五六個人會分兩批人去購買飯、飲品、蛋糕等，單是看要到那間店鋪選購，都要考考腦筋。但這樣的過程是最有趣味的，因為以前未試過辦理這些事，現在和組員一起商量，大家一起交換意見，很有學生時代去旅行的味道，真是十分開心！但世事變化很大，到下半又不同了，有組員因找到新工作而暫時返不到小組，有些身體不舒服又未能聚會，又有組員不幸過身……雖然有很多事情發生，但我們都感恩和懷念曾經有這位好友福龍一起相聚生活過，欣賞和感染到他真誠的關心及做事的熱誠！相信對我們所有組員是一個美好的回憶！祈望各位組員和我能將福龍這種真誠助人的精神延續下去，給社會人士知道康復者其實和普通人一樣，都能對身邊的人有幫助及對社會有貢獻的！並願將愛的福音大大發揚！

隱基底組



耀明 (組長)

感謝神的恩典和祝福，紅磡組於2014年1月順利發展為隱基底組。在導師和義工委身基督、忠心事奉，加上他們用心的帶領，不禁推動組員更投入參與，令我們有更大的領受和得著，不得不向他們獻上衷心的感謝！

每次聚會前，部分組員和導師會一起晚餐，讓大家有良好的溝通，為聚會作好準備，並過著愉快的肢體相交生活。組員無論在領詩、領週會、靈修分享、預備都十分充足，認真事奉神，實在值得欣賞！大家又願意坦誠分享，其他組員樂於聆聽，給予支持和鼓勵，令小組洋溢著溫暖的氣氛！

小組有幾次“主再來”的專題分享，組員認真討論，讓他們知道謹慎自守，警醒禱告度日的重要！此外，組員透過資源中心舉辦的書籍及影音推介，備了一些屬靈書籍和影音產品，有助他們的靈命成長！本年度又有新朋友加入小組，增添很多生氣，實在值得感恩！

Elijah Group

Benny (Group Leader)

This early year, many group members attended the fellowship. There's more than 20 members joining the activities, altogether enjoying the birthday week and various activities. A member even donated a suckling pig. The scene was full of warmth and joy. Sometimes for buying activities' things, five to six people divided into two groups to buy meal, drinks, cakes, etc. There's already a challenge when choosing a shop to purchase. Yet, such process was very interesting because we haven't organized that task before. Now we can discuss with group members and share our opinion. And it recalls our times of tour in student life. It's really happy. However, there's a big change in the late year. There's member temporarily not able to join the fellowship because of getting a new job. There're others not feeling well and can't attend the fellowship. And there's member unfortunately passed away. Although many incidents is happening, we feel thankful and miss this good friend Fook Lung that we have met and lived together. We appreciate his sincere care and passion about work. I believe there's a good memory for all of our group members. Hope every group members and I can extend the will of helping others from Fook Lung, and let the society realize rehab people are the same as normal people. They can also help others and contribute to the society. Wish we spread out the grace of love.

En-gedi Group

Yiu Ming (Group Leder)

Thank you God for His grace and blessings. The Hung Hom group has been renamed to En-gedi group since January 2014. We are very thankful for our dedicated leader and volunteers, who served wholeheartedly in the name of Jesus Christ. Their guidance certainly encourages all members to participate actively in the group, thus bringing us into deeper experiencing with God and more blessings.

Before each group meeting, some group members and leader would gather together for a fellowship dinner. Thus, creating wonderful opportunities to prepare for the meeting and to know each other at a deeper level. Be in worship time, sharing of scriptures or facilitating various topics, it is of great admiration to all members who came very well-prepared for all these aspects. It is without doubt that they are serving God wholeheartedly. The kind and encouraging words, willingness to share and listen brings all the members closer, creating a warm and friendly environment.

In numerous occasions, the group members earnestly discussed the topic on "The Return of The Lord". The discussion teaches them the importance of preparing themselves for the return of The Lord as they pray about it. In preparing and helping them to grow spiritually, the group members may borrow books or audio CD from Oi Hip resource centre. This year, there are more people joining our group. This certainly livens up the group and we are very thankful for that!



東區組

梁夢熊（導師）

一直以來港島區只有一個互助小組服侍精神病康復者，感謝主！今年天父上帝帶領我們，於本年二月在港島東區成立多一個小組，而且是由真情組差派兩位導師及四位組員成為本小組的骨幹，接著招收一些組員和義工，至今每次平衡聚會人數有10人左右。由於是一個全新的組合，我們都需要時間彼此適應和磨合，在此多謝各組員、導師們和義工的愛心和忍耐，令到小組的凝聚力不錯，在小組以外，大家都有不少非正式的聚會。

除此之外，導師和義工們，經常在whatsapp此溝通，而且小組聚會後亦會召開一些定期檢討會，務求達到大家一起成長，在神的愛裡，互相扶持。但願本小組不但是讓更多未認識救恩的康復者透過小組蒙神救贖，同時愛協亦希望能與本區的教會有一個緊密的結連，一同為精神健康出一份力，一起以伙伴關係服侍精神病康復者，啊們！

Hong Kong Island East Group

Stephen Leung (Counselor)

There is only one mutual help group for the mentally ill on the Hong Kong Island. Give thanks to God! In February of this year, our Father led us to set up another new group in the Hong Kong Island East district. Meanwhile, two counsellors and four members were sent from the Sincere Group to our group as core members. In addition, one volunteer and some new members were recruited. Up to now, over ten persons have joined our group meetings. We need to take time for the members to adjust to the group. Right now, the cohesion in the group is quite good. We give thanks to counsellors, a volunteer and group members who are patient and love each other. Besides the formal group meetings, we also have many informal gatherings.

Furthermore, counsellors and a volunteer communicate with each other through whatsapp and also meet periodically to review the group in order to enhance our growth and mutual support in God's love. May our group serve those ex-mental patients who do not believe Jesus Christ and finally they can receive our God's salvation. We also hope that the Oi Hip Fellowship can work together with local churches as partners to serve the ex-mentally ill. Amen!



活動報告

活動	日期	參與人數
教育及推廣組		
中國神學研究院輔導科來訪愛協	3/4/13	30人
聯合關懷傷殘人士福音事工研討會暨傷健佈道會	6/4/13	320人
精神健康主日(兩堂)——宣道會沙角堂	6/4/13	80人
精神健康主日——宣道會沙角堂	7/4/13	80人
話劇組——訓練班	13/4, 27/4, 25/5/13	10人
福音證主為精神康復者祈禱會	17/4/13	60人
中國神學研究院課堂分享愛協異象與服侍	17/4/13	70人
精神健康主日——播道會康福堂	21/4/13	300人
精神健康主日——崇真會福康長者中心	27/4/13	90人
精神健康主日——崇真會廣福頤養院	27/4/13	90人
救恩書院情緒健康週會講座	3/5/13	400人
深水埗錫安浸信會婦女組來訪愛協	7/5/13	21人
「愛中重生——精神病患的復元」講座	11/5/13	270人
精神健康主日——宣道會新興堂	19/5/13	250人
田裕浸信會職青團契專題——認識抑鬱症	25/5/13	10人
精神健康主日——元朗八鄉迦密園教會	26/5/13	33人
基督教惠荃堂——認識本地福音工作/機構	26/5/13	18人
旺角靈耀堂青年團來訪愛協	30/5/13	25人
新福事工協會婦女小組課程——認識愛協團契及精神病康復服務	13/6/13	10人
中華基督教播道會同福堂分享——認識都市精神病	18/6/13	55人
話劇組	22/6, 27/7, 24/8, 31/8, 21/9, 28/9, 5/10, 26/10, 2/11/13, 8/2, 22/3/14	9人
播道會同福堂分享「精神病康復的社區資源」	2/7/13	40人
飛越迷牆課程	18/7, 25/7, 1/8, 8/8, 15/8, 22/8/13	69人
精神健康主日——基立浸信會	21/7/13	114人
田裕浸信會約書亞團契分享抑鬱症個案研討	23/7/13	5人
香港心理衛生會李鄭屋宿舍佈道會(香港公開大學基督徒詩班邀請)	3/8/13	10人
深水埗浸信會以撒團精神健康專題	10/8/13	20人
精神健康主日——基督教沙角福音堂	11/8/13	67人
精神健康主日——信道會慈雲山堂	18/8/13	90人
彩虹服務中心探訪交流	26/8/13	19人
「認識精神科藥物」講座	16/9/13	22人
中國佈道會感恩堂專題：「如何關懷精神病康復者」	29/9/13	28人
將軍澳醫院院牧事工——「青少年與思覺失調」講座	29/9/13	60人
與中國神學研究院學生介紹愛協異象與服侍	2/10/13	4人
「亞健康」公開講座	11/10/13	90人
銘恩中心——精神復康事工之探討	15/10/13	15人
短宣中心課堂分享如何向精神病人傳福音	15/10/13	24人
旺角潮語浸信會精神健康分享	20/10/13	16人
中國神學研究院當代宣教使命課堂分享如何關顧精神病康復者	23/10/13	50人
將軍澳醫院院牧事工——「青少年與抑鬱症」講座	27/10/13	80人
葵荃青愛網教牧團契——推介愛協聖誕佈道會	12/11/13	20人
精神健康主日——榕樹頭之光(油麻地堂)	23/11/13	30人
精神健康主日——榕樹頭之光(長沙灣堂)	24/11/13	60人
銘恩中心——認識重性與輕性精神病	25/11/13	26人
職業治療知多少	29/11/13	16人
銘恩中心——認識精神科藥物	2/12/13	21人
精神健康主日——四方福音會大角咀堂	15/12/13	160人
銘恩中心——危機處理	16/12/13	17人
香港專業進修學校副學士學生來訪愛協	16/12/13	3人
銘恩中心——精神病者的社區資源運用	19/12/13	17人
與中國神學研究院學生分享躁鬱症者的困難和需要	7/1/14	2人
旺角浸信會祈禱會愛協異象分享	15/1/14	30人
宣道會活石堂——認識都市精神病	22/1/14	30人
精神健康主日——宣道會沙角堂	25, 26/1/14	80人
精神健康主日——東方基督教會恩光堂(早、午堂)	26/1/14	31人
宣道會活石堂——如何關懷精神病康復者	12/2/14	32人
個案研討	17/2/14	13人
「心意放輕鬆」綜合活動	22/2/14	120人
「照顧精神康復者的迷思與謬誤」公開講座	28/2/14	158人

邊緣回望——組群的牧養與關顧（精神復康）	28/2/14	32人
銘恩中心——城市宣教之精神康事工	3/3/14	11人
銘恩中心——城市宣教之靈性關顧	10/3/14	12人
精神健康主日——中國基督教播道會愛泉堂	23/3/14	90人
小組及輔導組		
與醫生交流分享會	7/9/13	32人
與家屬交流日營	4/1/14	38人
靈牧組		
詩班（才藝表演）	6/4/13	14人
領袖門訓A班	7/4, 27/4, 22/6, 24/8, 12/10/13, 18/1, 22/3/14	6人
雙月禱會	12/4, 14/6, 9/8, 25/10, 13/12/13, 14/2/14	24人
領袖門訓E班	20/4, 25/5, 22/6, 27/7, 18/9, 23/11/13, 15/2, 15/3/14	5人
詩班	20/4, 22/6, 27/7, 31/8, 28/9, 12/10/13, 15/2, 29/3/14	13人
東區尤德夫人那打素醫院探訪	4/5/13	35人
董事、導師、義工、同工退修日	18/5/13	30人
領袖門訓C班	29/5, 3/7, 6/11/13, 15/1, 19/3/14	9人
讚美操	1/6, 8/6, 15/6, 29/6, 20/7, 26/7, 2/8, 31/8, 27/9, 12/10, 30/10, 9/11/13, 11/1, 8/2, 17/2, 1/3, 28/3/14	11人
領袖門訓B班	2/6, 18/8, 20/10, 1/12/13, 16/1/14	7人
葵涌醫院院牧部院友聚會	4/7/13	46人
領袖門訓D班	24/7, 9/10/13, 22/1/14	6人
傳福音訓練班	15/8/13	3人
探訪聯會日間醫院	19/9/13	45人
23周年感恩會	3/11/13	189人
23周年感恩會愛筵	3/11/13	192人
詩班感恩會練詩	3/11/13	16人
讚美操匯演	16/11/13	13人
領袖門訓營	7-8/12/13	32人
報佳音練詩	21, 23/12/13	17人
聖誕報佳音	23/12/13	20人
聖誕佳音聯歡晚會——重聚日	18/1/14	18人
望道號福音船到訪交流	14/3/14	27人
義工組		
外展探訪明愛精神健康社區中心——全樂軒	25/5/13	19人
2013親恩頌暨生日會	28/5, 27/8, 26/11/13	34人
打保齡球	1/6/13	15人
外展探訪基德復康中心	29/6/13	23人
精神健康法律講座——病人權益及法律保護	29/7/13	44人
外展探訪善導會精神健康社區中心——龍澄坊	10/8/13	10人
運動日——放風箏	1/10/13	17人
四組聯合生活營（樟木頭老人度假中心）	19-20/10/13	25人
運動日——遠足	9/11/13	7人
生活營（荃灣曹公潭戶外康樂中心）	16-17/11/13	19人
運動日——東涌白芒行山	19/11/13	30人
探訪浸信會愛群精神健康綜合社區中心（港島東區）	23/11/13	20人
探訪長沙灣基道堂失聰團契	15/12/13	11人
拉、明、摩、以4組聯合生活營	29-30/12/13	18人
初四培靈會暨團拜旅遊	3/2/14	49人
2014親恩頌暨生日會	25/2/14	32人
聯組生活營（曹公潭度假村）	1-2/3/14	20人
義工交流會	16/3/14	10人
探訪善導會天水圍精神健康綜合社區中心（龍澄坊）	29/3/14	10人
海洋公園一天遊	29/3/14	8人
資源中心組		
書籍及影音分享會	13/7/13	13人
探訪組		
探訪交流分享會	13/4/13	17人
探訪技巧訓練班	3/8/13	15人
探訪交流分享會	30/11/13	14人

Report of Activities

Item	Date	No. of Participants
Mental Health Education & Promotion Committee		
Persons of China Graduate School of Theology Counseling Division visiting Oi Hip	3/4/13	30
Joint care for the disabled evangelism seminar and PHAB Evangelistic	6/4/13	320
Mental Health Sunday Service (Two Services) — Sha Kok Alliance Church	6/4/13	80
Mental Health Sunday Service — Sha Kok Alliance Church	7/4/13	80
Drama Group — Training Course	13/4, 27/4, 25/5/13	10
Prayer for mental patients at Christians Communications Ltd.	17/4/13	60
Sharing of Oi Hip Vision & Service in Lesson of China Graduate School of Theology	17/4/13	70
Mental Health Sunday Service — EFCC Kang Fu Tong	21/4/13	300
Mental Health Sunday Service — Fuk Elderly Centre	27/4/13	90
Mental Health Sunday Service — Tsung Tsin Kwong Fuk Home	27/4/13	90
Talk in Mood Health Week of Salvation College	3/5/13	400
Women group of Sham Shui Po Zion Baptist Church visiting Oi Hip	7/5/13	21
Talk of "Reborn in Love — Recovery of Mental Illness"	11/5/13	270
Mental Health Sunday Service — Emerging Church Missionary Alliance	19/5/13	250
Working Youth Fellowship of Tian Yu Baptist Church — Recognizing Depression	25/5/13	10
Mental Health Sunday Service — Yuen Long Pat Heung Carmel Park Church	26/5/13	33
Wai Tsuen Christian Church — Recognizing the work and organization of Local Gospel	26/5/13	18
Youth Fellowship of Mong Kok Ling Liang Church visiting Oi Hip	30/5/13	25
Lesson for Women group of New Arrivals — Recognizing Oi Hip Fellowship and her Mental Health Services	13/6/13	10
E.F.C.C. Tung Fook Church — Recognizing Urban Psychosis	18/6/13	55
Drama Group	22/6, 27/7, 24/8, 31/8, 21/9, 28/9, 5/10, 26/10, 2/11/13; 8/2, 22/3/14	9
E.F.C.C. Tung Fook Church — Community Resources of Psychiatric Rehabilitation	2/7/13	40
The Overcoming Bewilderment Course	18/7, 25/7, 1/8, 8/8, 15/8, 22/8/13	69
Mental Health Sunday Service — Cherith Baptist Church	21/7/13	114
Case Study of Depression Sharing with Joshua Fellowship of Tian Yu Baptist Church	23/7/13	5
Evangelistic in Lei Cheng Uk Quarters of Mental Health Association of Hong Kong (Invited by the Christian Choir of The Open University of Hong Kong)	3/8/13	10
Mental Health Topic for Isaac Fellowship of Sham Shui Po Baptist Church	10/8/13	20
Mental Health Sunday Service — Sha Kok Gospel Church	11/8/13	67
Mental Health Sunday Service — Christian Shone Tao Association Tsz Wan Shan Church	18/8/13	90
Sharing & Visiting by Rainbow Service Centre	26/8/13	19
Talk for "Understanding of Psychotropic Drugs"	16/9/13	22
Special Topic for Evangelize China Fellowship Grace Church: "How to care for Ex-mi?"	29/9/13	28
Talk for "Youth and Psychosis" in Tseung Kwan O Hospital Chaplaincy	29/9/13	60
Introduce Oi Hip Vision & Service to students of China Graduate School of Theology	2/10/13	4
Public Talk: "Subhealth"	11/10/13	90
Remembrance of Grace Church — Discussion on Mental Health Rehabilitation	15/10/13	15

Sharing the topic of "How to preach the gospel to the mentally ill" as lesson in Hong Kong Christian Short Term Mission Training Centre	15/10/13	24
Sharing of Mental Health to Mongkok Swatow Baptist Church	20/10/13	16
Sharing of "How to take care of ex-mi" for the lesson of "Contemporary Missionary Mission" in China Graduate School of Theology	23/10/13	50
Talk for "Youth and Depression" in Tseung Kwan O Hospital Chaplaincy	27/10/13	80
Promotion of Christmas Evangelistic of Oi Hip Fellowship for Love Network of Pastoral Fellowship in Kwai Chung, Tsing Yi and Tsuen Wan	12/11/13	20
Mental Health Sunday Service — Light of Yung Shu Tau Christian Church (Yau Ma Tei Church)	23/11/13	30
Mental Health Sunday Service — Light of Yung Shu Tau Christian Church (Cheung Sha Wan Church)	24/11/13	60
Remembrance of Grace Church — Recognizing the Severeness and Lightness of Psychosis	25/11/13	26
Knowledge of Occupational Therapy	29/11/13	16
Remembrance of Grace Church — Recognizing Psychotropic Drugs	2/12/13	21
Mental Health Sunday Service — Tai Kok Tsui Foursquare Gospel Church	15/12/13	160
Remembrance of Grace Church — Crisis Management	16/12/13	17
Associate Students of Hong Kong College of Technology visiting Oi Hip	16/12/13	3
Remembrance of Grace Church — Use of District Resources for Mental Patients	19/12/13	17
Sharing with students of the China Graduate School of Theology about the Difficulties and Needs of Patients of Bipolar Disorder	7/1/14	2
Sharing the Vision of Oi Hip in the Prayer Meeting of Mongkok Baptist Church	15/1/14	30
Living Stone Christian and Missionary Alliance church — Urban Psychosis	22/1/14	30
Mental Health Sunday Service — Sha Kok Alliance Church	25, 26/1/14	80
Mental Health Sunday Service — Oriental Christian Gracious Light Church (Morning and Afternoon Services)	26/1/14	31
Living Stone Christian and Missionary Alliance church — How to Take Care of Ex-mi	12/2/14	32
Case Study	17/2/14	13
"Relax the Mind" Integrated Activities	22/2/14	120
Public Talk—"The Myths and Fallacies in Taking Care of Ex-mi"	28/2/14	158
Looking Back Edge—Shepherding and Taking Care of the group of Ex-mi	28/2/14	32
Remembrance of Grace Church — The Work of Local Gospel of Mental Rehabilitation	3/3/14	11
Remembrance of Grace Church — The Spiritual Care in Local Gospel	10/3/14	12
Mental Health Sunday Service — Evangelical Free Church of China – The Fountain of Love Church	23/3/14	90
Group & Counseling Committee		
Sharing with Doctor	7/9/13	32
Day Camp for Relatives of the Ex-mi	4/1/14	38
Pastoral Care Committee		
Choir (Talent Show)	6/4/13	14
Leaders Discipleship (Class A)	7/4, 27/4, 22/6, 24/8, 12/10/13; 18/1, 22/3/14	6
Bi-monthly Prayer Meeting	12/4, 14/6, 9/8, 25/10, 13/12/13; 14/2/14	24
Leaders Discipleship (Class E)	20/4, 25/5, 22/6, 27/7, 18/9, 23/11/13; 15/2, 15/3/14	5
Choir	20/4, 22/6, 27/7, 31/8, 28/9, 12/10/13; 15/2, 29/3/14	13
Visiting Pamela Youde Nethersole Eastern Hospital	4/5/13	35
Directors, Counselors, Volunteers and Staffs Retreat Day	18/5/13	30
Leaders Discipleship (Class C)	29/5, 3/7, 6/11/13; 15/1, 19/3/14	9

Praise Parade	1/6, 8/6, 15/6, 29/6, 20/7, 26/7, 2/8, 31/8, 27/9, 12/10, 30/10, 9/11/13; 11/1, 8/2, 17/2, 1/3, 28/3/14	11
Leaders Discipleship (Class B)	2/6, 18/8, 20/10, 1/12/13; 16/1/14	7
Gathering with Patients in Kwai Chung Hospital Chaplaincy	4/7/13	46
Leaders Discipleship (Class D)	24/7, 9/10/13; 22/1/14	6
Evangelism Training	15/8/13	3
Visiting the Union of Day Hospital	19/9/13	45
The 23rd anniversary thanksgiving service	3/11/13	189
The 23rd anniversary thanksgiving Love Feast	3/11/13	192
Rehearsal of Hymns for Choir in thanksgiving service	3/11/13	16
Praise Parade Show	16/11/13	13
Leaders Discipleship Retreat Camp	7-8/12/13	32
Rehearsal of Hymns for Choir in Preaching Gospel	21, 23/12/13	17
Christmas Caroling	23/12/13	20
Christmas Caroling Gala — Reunion Day	18/1/14	18
Logos Hope Crews Visiting Oi Hip	14/3/14	27
Volunteer Committee		
Outreaching visits Caritas Mental Health Community Centre — Caritas Wellness Link	25/5/13	19
Birthday Party of Thanksgiving to Relatives of year 2013	28/5, 27/8, 26/11/13	34
Bowling	1/6/13	15
Outreaching visit of Kidd Rehabilitation Centre	29/6/13	23
Talk about Laws of Mental Health—Patient Rights and Legal Protection	29/7/13	44
Outreaching visit of SRACP Mental Health Community Centre — Long Cheng Square	10/8/13	10
Sports Day — Playing Kite	1/10/13	17
Four groups combined camp (ZhangMu Tou elderly Holiday Centre)	19-20/10/13	25
Sports Day — Hiking	9/11/13	7
Camp (Tseun Wan Tso Kung Tam Outdoor Recreation Centre)	16-17/11/13	19
Sports Day — Hiking at Pak Mong of Tung Chung	19/11/13	30
Visit Baptist Oi Kwan Integrated Community Health Centre (Eastern District)	23/11/13	20
Visit Cheung Sha Wan Fellowship of Deafness of Kei To Church	15/12/13	11
Joint group camp of Lazarus, Brightness, Moses & Emmanuel four groups	29-30/12/13	18
Bible Conference and Greetings in Lunar New Year	3/2/14	4
Birthday Party of Thanksgiving to Relatives of year 2014	25/2/14	32
Joint group camp (Tso Kung Tam Resort)	1-2/3/14	20
Sharing for Volunteers	16/3/14	10
Visit SRACP Tin Shui Wai Integrated Community Centre for Mental Health — Long Cheng Square	29/3/14	10
Ocean Park Day Tour	29/3/14	8
Resource Centre Committee		
Books and Tapes Sharing Meeting	13/7/13	13
Visit Committee		
Sharing meeting for Volunteers of Visit	13/4/13	17
Training Course for visiting and caring	3/8/13	15
Sharing meeting for Volunteers of Visit	30/11/13	14



諮詢服務報告

Enquiry Service Report



本年度接到的諮詢共324個，就內容分類，主要是查詢服務及尋求協助兩類。查詢服務主要是想了解團契之服務，例如小組之內容、形式、時間、地點等。查詢人多為協助精神病康復者的人，有家屬、教會人士、朋友或專業輔導者。而尋求協助的，涉及問題是多方面，例如尋求心理輔導，處理精神病者之行為問題，對精神病之認識，怎樣分辨是否有精神病，有甚麼服務幫助他們及吃藥之問題等，除患者之親友外，患者本身也有作出這類諮詢，我們處理這些諮詢會有關之問題作出解答，或作合適轉介。



This year we had received 324 enquiries totally. By content, they can be divided into two categories: enquiries on services and seeking for help. Those inquired about services would like to know about our services. For example, the contents of our group meeting, the formats, time and places we met. They were mainly the helping persons such as their relatives, people of churches, friends or professional helpers. For those who were seeking for help, they asked for quite a large range of problems. For examples, seeking for psychological counseling, methods of coping with the behavioral problems of the patients, knowledge about mental illnesses, how to recognise people who had mental illness, what kinds of services can help them and the issue of drug-taking etc. Besides relatives and friends of patients, patients themselves would also make enquiries on these aspects. We would try to reply to these questions or make appropriate referrals.



二零一三年四月至二零一四年三月同工報告

STAFF'S REPORT FROM APRIL, 2013 TO MARCH, 2014

工作內容	Items	執行幹事 A.S.W.O.	傳道幹事 Pastor	程序幹事 S.W.A.	關顧幹事 Pastor	總數 Total
1. 互助小組	Groups	110	69	63	68	310
2. 活動	Activities	26	16	15	0	57
3. 諮詢服務	Enquiry Service	112	54	38	120	324
4. 輔導	Counseling					
電話	Telephone	336	160	37	430	963
面談	Interviews	146	62	13	145	366
5. 探訪	Visit					
家訪	Home	10	4	2	30	46
探病	Hospital	8	6	12	49	75
6. 轉介						
接見新人	Screenings	22	18	9	25	74
轉介其他機構	Referrals	18	0	0	1	19
7. 推廣	Promotion					
文字	article	3	3	1	1	8
分享	sharing	3	1	4	2	10
拜訪	visit	10	5	6	19	40
課程	course	5	10	7	0	22
講座	Talk	8	14	6	8	36
愛協主日	Oi Hip's Day	0	10	0	13	23
話劇	Drama	0	15	0	0	15
8. 牧養關懷	Pastoral care					
祈禱會	Prayers' meeting	46	49	40	42	177
醫院探訪	Hospital visit	2	3	2	2	9
栽培訓練	Training	13	8	6	12	39
詩班	Choir	0	1	0	12	13
特別聚會	Special meeting	15	25	18	13	71
9. 資源中心	Resource Centre					
借書人次	Book lending	0	0	89	0	89
借影音資料人次	AV material lending	0	0	67	0	67
10. 其他	Others					
工作會議	Conference	114	59	65	54	292
通訊	Newsletters	5	1	0	1	7
義工	Volunteers	155	0	0	3	158
督導	Supervision	41	2	8	7	58
同工受訓	Training Courses	1	0	1	2	4
接見義工	Intake Volunteer	6	1	0	2	9

財政報告

Financial Report 2013/2014

綜合收支表 STATEMENT OF COMPREHENSIVE INCOME

截至二零一四年三月三十一日 FOR THE YEAR ENDED 31ST MARCH, 2014

(以港幣為列報單位 Expressed in Hong Kong Dollars)

收入	INCOME (HK\$)	年份 YEAR	
		(2014)	(2013)
收到奉獻	Offerings Received	1,283,526.10	888,654.47
公益金資助	Subsidy from the Community Chest	546,700.00	530,700.00
活動及講座收入	Receipt for Activities, Course, Lecture and Talk	124,077.12	126,625.50
銀行利息	Interest Income	34.83	41.22
其他收入	Sundry Income	6,538.80	5,965.44
		<u>1,960,876.85</u>	<u>1,551,986.63</u>
支出 EXPENSES			
活動開支	Activities Expenses	86,197.60	110,975.70
義工舟車費	Allowance for Voluntary Workers	5,514.00	3,048.00
銀行服務費	Bank Charges	500.00	400.00
書籍影音	Books, Video and Cassettes	3,623.20	3,854.00
電腦用品	Computer Expenses	985.00	435.90
折舊	Depreciation	3,167.14	5,647.24
電費及水費	Electricity and Water	17,483.30	17,329.70
保險	Insurance	19,781.82	19,594.09
互聯網費	Internet Charges	0.00	1,536.00
強積金供款	Mandatory Provident Fund Contribution	89,932.50	88,268.25
大廈管理	Management Fee	16,620.00	16,620.00
會員費	Membership Fee	2,950.00	3,050.00
傳呼及手電費	Pager & Mobile Phone Charges	1,593.00	1,776.00
郵費	Postage	22,142.70	28,934.40
印刷及文具	Printing and Stationery	45,586.12	57,436.72
推廣費	Promotion Expense	1,000.00	0.00
差餉及地租	Government Rent & Rates	3,062.00	2,736.00
維修費	Repair and Maintenance	121,392.00	10,740.00
薪津	Salaries and Allowances	1,588,742.32	1,603,278.75
雜項支出	Sundry Expenses	15,251.50	11,838.70
電話費	Telephone	3,600.00	557.00
交通津貼	Travelling	4,694.00	3,850.50
小型器材添置	Minor Purchase (Equipment)	591.00	1,275.90
		<u>2,054,409.30</u>	<u>1,993,182.85</u>
本年度赤字	DEFICIT FOR THE YEAR	<u>(93,532.45)</u>	<u>(441,196.22)</u>
其他綜合收入 Other comprehensive income			
樓宇基金不敷	Deficit for Premise fund	(31,004.00)	(31,004.00)
社區照顧計劃不敷	Deficit for Community care project fund	(22,687.70)	(8,557.50)
發展基金盈餘	Development fund	0.00	403,542.50
特別撥款盈餘	Surplus for Offering Special Funding 2012	11,294.60	(9,821.60)
公益金一次額外撥款結餘	One-off supplementary Allocation	(8,007.10)	24,882.10
資本基金結餘	Capital Project Fund 13-14	14,074.00	32,984.00
猶太人會堂基金盈餘	Surplus for Ohel Leah Synagogue Charity 13-14	10,258.40	47,779.75
綜合收入年度總和	Total comprehensive income for the year	<u>(119,604.25)</u>	<u>18,609.03</u>

財務報表

STATEMENT OF FINANCIAL POSITION

於二零一四年三月三十一日 AS AT 31ST MARCH, 2014
(以港幣為列報單位 Expressed in Hong Kong Dollars)

		備註	年份 YEAR	
			2014	2013
資產	ASSETS			
非流動資產	NON-CURRENT ASSETS			
房產、機器及設備	Property, plant and equipment	(Note 1)	1,071,782.80	1,058,265.94
流動資產	CURRENT ASSETS			
銀行存款	Cash at Bank		497,639.54	337,909.25
現金	Cash in Hand		3,323.40	62,560.80
			500,962.94	400,470.05
資產淨值	TOTAL ASSETS		1,572,745.74	1,458,735.99
儲備及負債	RESERVES AND LIABILITY			
儲備	RESERVES			
經常費	General Fund		201,150.58	94,084.03
樓宇基金	Premise Fund	(Note 2)	1,023,129.00	1,054,133.00
社區照顧計劃	Community Care Project Fund	(Note 3)	(17,634.69)	5,053.01
發展基金	Development Fund	(Note 4)	0.00	200,599.00
特別撥款	Offering Special Funding	(Note 5)	11,012.60	(282.00)
公益金一次額外撥款	One-off Supplementary Allocation	(Note 6)	(7.90)	7,999.20
資本基金 13-14	Capital Project Fund 13-14	(Note 7)	47,058.00	(630.00)
猶太人會堂基金 13-14	Ohel Leah Synagogue Charity 13-14	(Note 8)	58,038.15	47,779.75
儲備總額	TOTAL RESERVES		1,322,745.74	1,408,735.99
流動負債	CURRENT LIABILITY			
	Short Term Loan		250,000.00	0.00
預收款項	Receipt in advance		0.00	50,000.00
			250,000.00	50,000.00
儲備及負債總額	TOTAL RESERVES AND LIABILITY		1,572,745.74	1,458,735.99

The accompanying notes form an integral part of the financial statements.

The financial statements on pages 9 to 15 have been approved and authorised for issue by the Board of Directors and signed on its behalf by:



Director



Director

備註 Note

截至二零一四年三月三十一日 FOR THE YEAR ENDED 31ST MARCH, 2014
(以港幣為列報單位 Expressed in Hong Kong Dollars)

1. 房產、機器及設備 PROPERTY, PLANT AND EQUIPMENT

		Leasehold land	Building	Office equipment	Furniture	Computer	Total
成本	Cost						
於二〇一三年四月一日結存	As at 01.04.2013	1,536,600.00	13,597.00	69,188.00	17,585.20	123,403.00	1,760,373.20
增加	Additions	0.00	0.00	27,500.00	8,100.00	0.00	35,600.00
於二〇一四年三月三十一日結存	As at 31.03.2014	1,536,600.00	13,597.00	96,688.00	25,685.20	123,403.00	1,795,973.20
累計折舊	Accumulated Depreciation						
於二〇一三年四月一日結存	As at 01.04.2013	491,712.00	4,352.00	66,656.80	16,674.36	89,098.10	668,493.26
年度調整	Charged for the year	30,732.00	272.00	7,235.20	2,361.04	15,096.90	55,697.14
於二〇一四年三月卅一日結存	As at 31.03.2014	522,444.00	4,624.00	73,892.00	19,035.40	104,195.00	724,190.40
賬面淨值	Net Book Value						
於二〇一四年三月卅一日結存	As at 31.03.2014	1,014,156.00	8,973.00	22,796.00	6,649.80	19,208.00	1,071,782.80

The leasehold land and building is situated in Hong Kong and held under medium term leases.

2. 樓宇基金不敷 DEFICIT FOR PREMISE FUND

		年份 YEAR	
		2014	2013
支出	Expenditure		
房產折舊	Depreciation on leasehold and building	31,004.00	31,004.00
年度不敷	Deficit for the year	(31,004.00)	(31,004.00)

3. 社區照顧計劃基金不敷 DEFICIT FOR COMMUNITY CARE PROJECT FUND

收入	Income		
資助收入	Subvention received	149,860.00	149,860.00
活動收入	Activity received	1,945.50	2,132.00
		151,805.50	151,992.00
支出	Expenditure		
興趣及運動班	Interesting and sport courses expenses	4,879.70	4,636.40
餘暇活動	Leisure expenses	7,037.60	8,064.60
會議	Meeting expenses	0.00	48.40
薪酬	Salaries and allowances	127,980.00	114,060.00
講座	Seminars	853.30	1,020.00
雜項	Sundry expenses	20,918.50	19,546.40
培訓	Training	7,585.30	8,998.40
探訪	Visiting	5,238.80	4,175.30
		174,493.20	160,549.50
年度不敷	Deficit for the year	(22,687.70)	(8,557.50)

4. 發展基金款餘 SURPLUS FOR DEVELOPMENT FUND

收入	Income		
活動收入	Activity income	200,599.00	413,298.40
支出	Expenditure		
活動支出	Expenses	0.00	9,755.90
年度盈餘	Surplus for the year	200,599.00	403,542.50

5. 特別撥款盈餘 SURPLUS FOR OFFERING SPECIAL FUND 2012

收入	Income		
資助收入	Subvention received	50,000.00	0.00
活動收入	Activity income	15,270.00	1,020.00
		65,270.00	1,020.00
支出	Expenditure		
活動支出	Expenses	53,975.40	10,841.60
年度盈餘	Surplus for the year	11,294.60	(9,821.60)

6. 公益金一次過額外撥款餘款 DEFICIT FOR ONE-OFF SUPPLEMENTARY ALLOCATION (COMMUNITY CHEST)

收入	Income		
資助收入	Subvention received	0.00	51,520.00
講座收入	Mental Health Seminar 12-13	0.00	2,860.00
		0.00	54,380.00
支出	Expenditure		
義工費	Voluntary Service	8,007.10	11,139.00
精神健康講座	Mental Health Seminar	0.00	18,358.90
		8,007.10	29,497.90
年度不敷	Deficit for the year	(8,007.10)	24,882.10

7. 資本基金13-14 CAPITAL PROJECT FUND 13-14

收入	Income		
資助收入	Subvention received	35,600.00	0.00
支出	Expenditure		
支出	Expenses	21,526.00	0.00
年度結餘	Balance for the year	14,074.00	0.00

8. 猶太人會堂基金13-14 SURPLUS FOR OHEL LEAH SYNAGOGUE CHARITY 13-14

收入	Income		
資助收入	Subvention received	100,000.00	100,000.00
支出	Expenditure		
支出	Expenses	89,741.60	52,220.25
年度盈餘	Surplus for the year	10,258.40	47,779.75

財政預算 BUDGET 2014/2015

收入	INCOME	(HK\$)
1 奉獻	Donation	1,000,000
2 公益金	Subsidy from the Community Chest	563,200
3 社區照顧計劃	Community care Project Subvented by SWD	150,000
4 猶太人會堂基金	Ohel Leah Synagogue Charity	100,000
5 活動及講座收費	Receipt for Activities, Course & Talk	120,000
6 籌款	Fund raising	400,000
7 雜項收入	Sundry income	5,000
總收入	Total Income	2,338,200

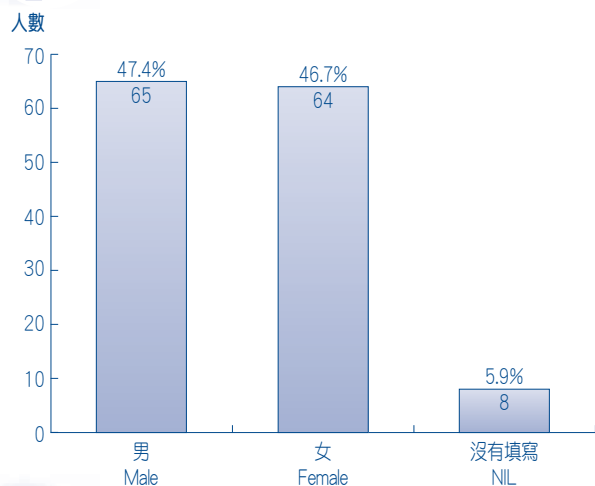
支出	EXPENDITURE	(HK\$)
1. 同工薪酬	Staff Emoluments:	
薪金	Salaries	1,992,600
強積金供款	Mandatory Provident Fund Contribution	99,630
2. 行政費用	Administrative Expenses:	
銀行服務費	Bank Charges	500
郵費	Postage	30,000
傳呼機費	Mobile Phone & Pager	1,800
電話費及互聯網費	Telephone & Internet Charges	11,300
3. 公共費用	Utilities	
電費及水費	Electricity & Water	18,000
4. 器材及物資	Equipment and Consumables	
印刷及文具	Printing & Stationery	60,000
書刊影音	Books, Audio-visual Materials	4,000
維修費	Repair & Maintenance	110,000
5. 折舊	Depreciation	6,000
6. 保險	Insurance	20,000
7. 活動開支	Activities Expenses	122,000
8. 交通費	Travelling Expenses	4,000
9. 義工津貼	Allowance for Voluntary Workers	6,000
10. 大廈管理費	House Management Fee	16,700
11. 會員費	Member fee	3,000
12. 差餉及地租	Rent & Rates	11,000
13. 雜項支出	Sundry Expenses	15,000
總支出	Total Expenditure	2,531,530
盈餘 / 赤字	Surplus/ (Deficit)	(\$193,330)

統計資料 STATISTICS

這統計對象主要為活躍之組員，即經常出席小組之組員。
The target of the survey included mainly the active members who had attended the group frequently.

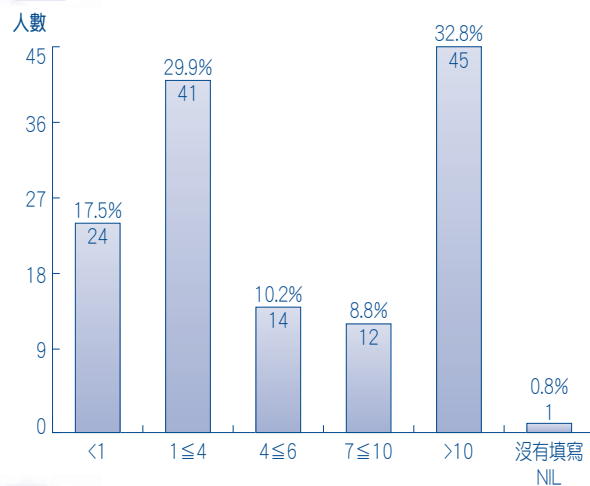
1

組員性別
Sex Distribution



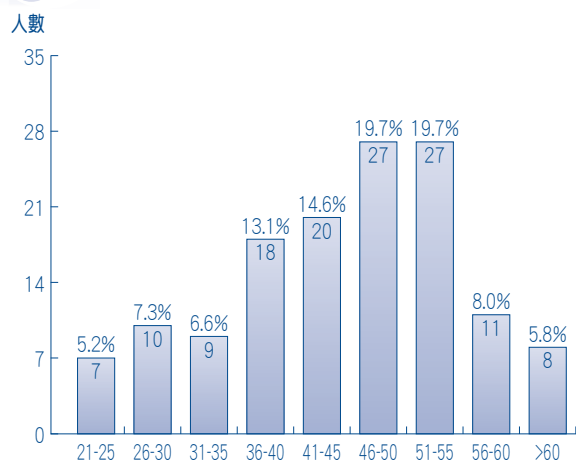
2

參加愛協年數
Year of Participation



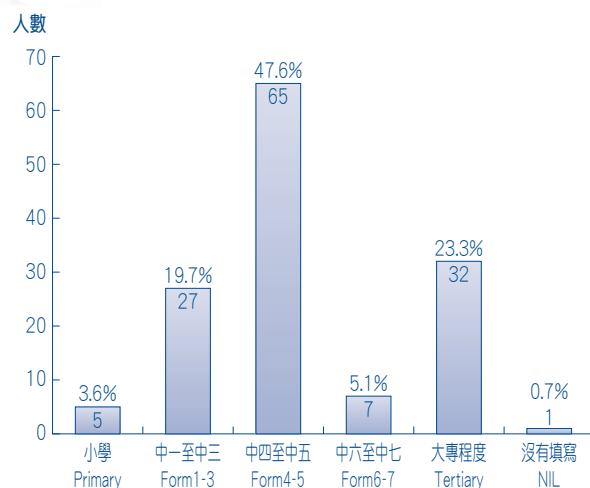
3

年齡分佈
Age Distribution



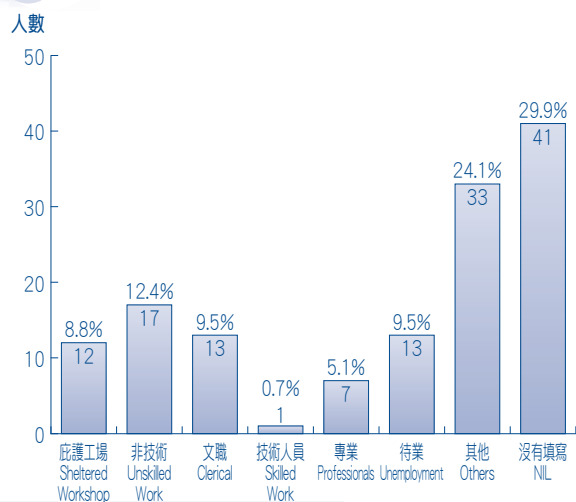
4

教育程度
Educational Level



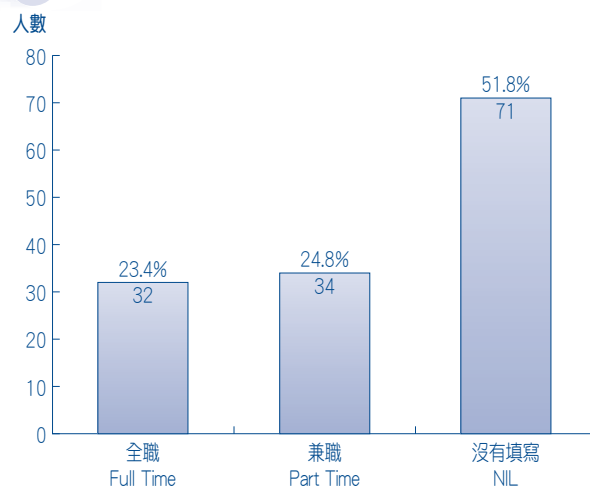
5

職業
Occupation



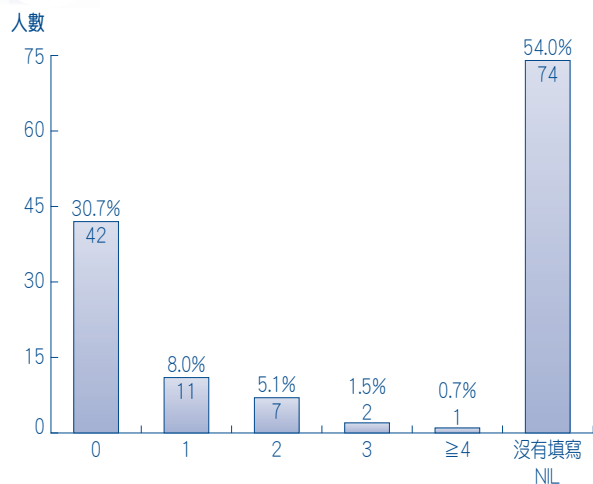
6

工作時間
Time of Work



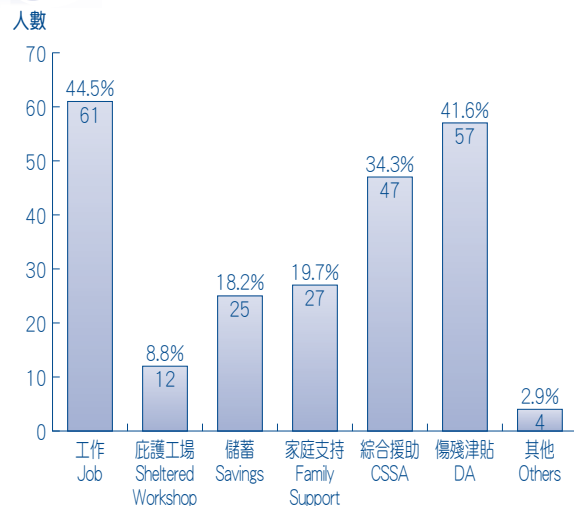
7

過去一年轉業情況 Job Changed During Past Year



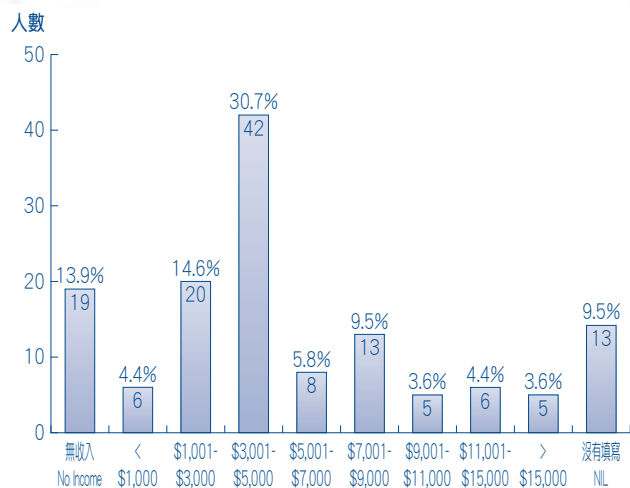
8

入息來源 (可多項) Source of Income



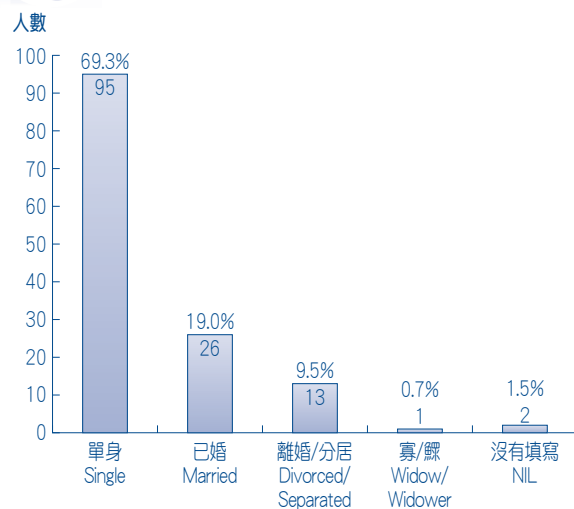
9

每月平均收入 Monthly Income



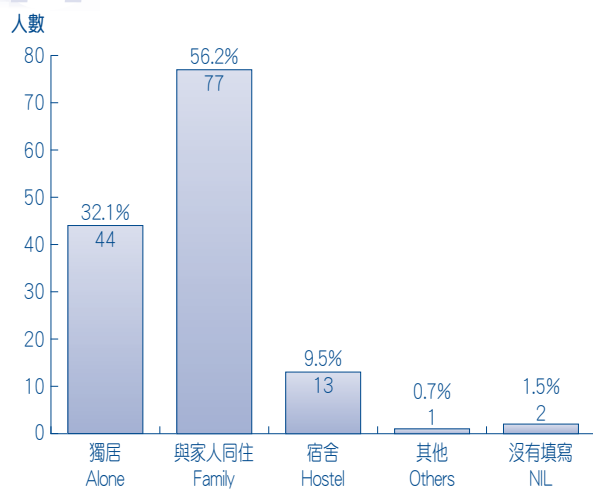
10

婚姻狀況 Marital Status



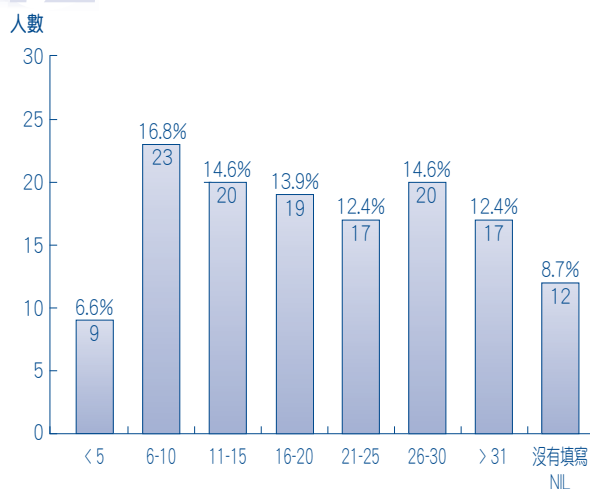
11

家庭狀況 Living Status



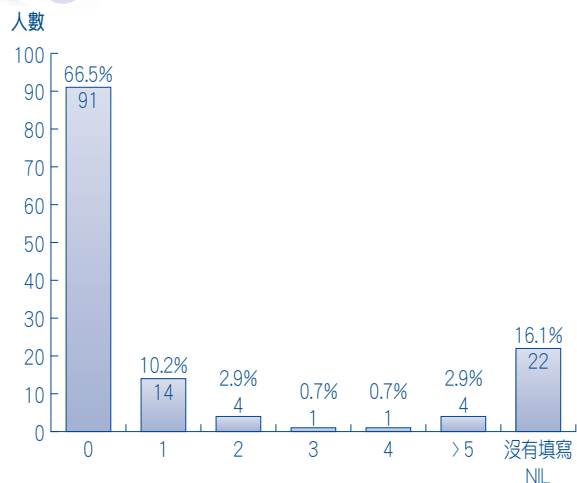
12

患病年數 Year of Mental Illness



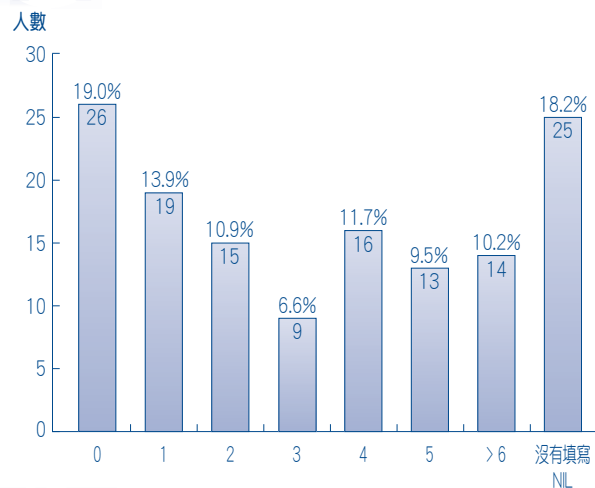
13

本年度入院次數
No. of Admission During the Year



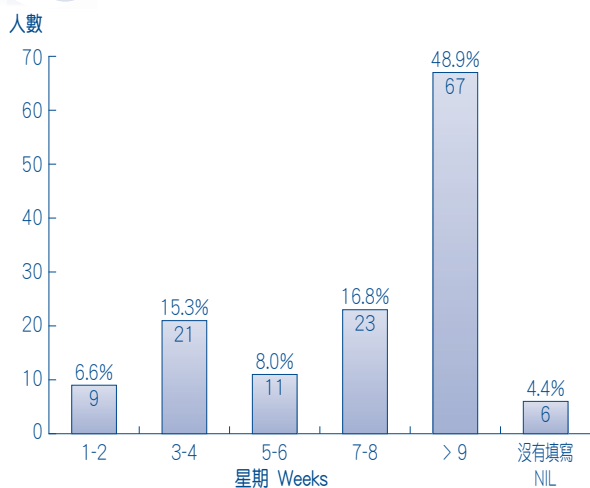
14

總共入院次數
Total No. of Hospital Admissions



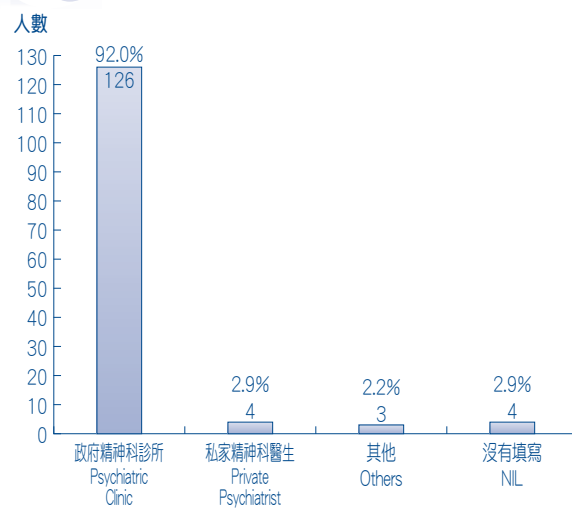
15

覆診期限
Interval of Follow-up



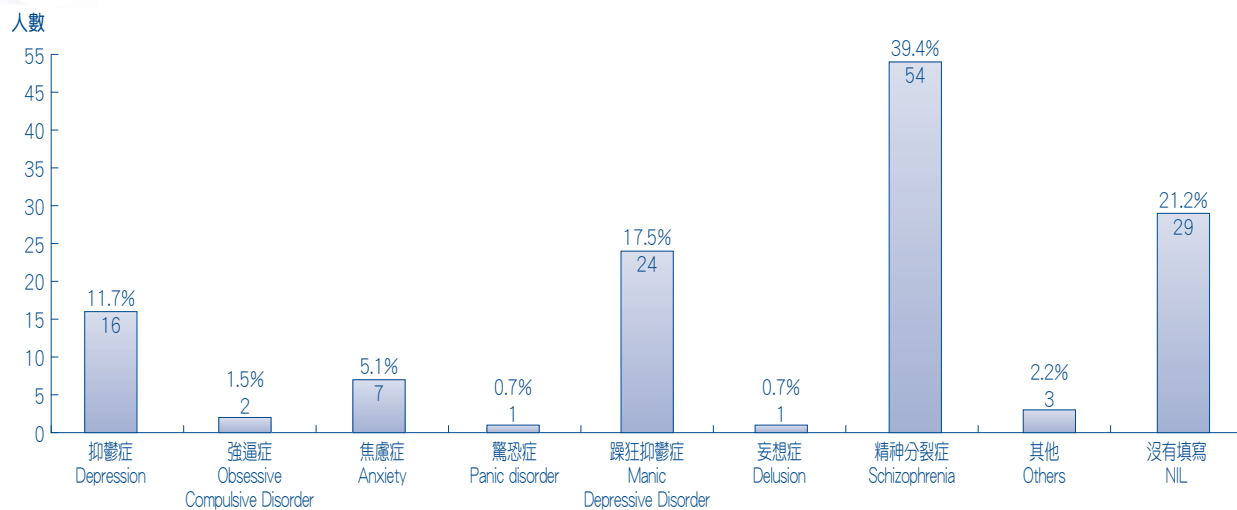
16

覆診之醫院
Place of Follow-up



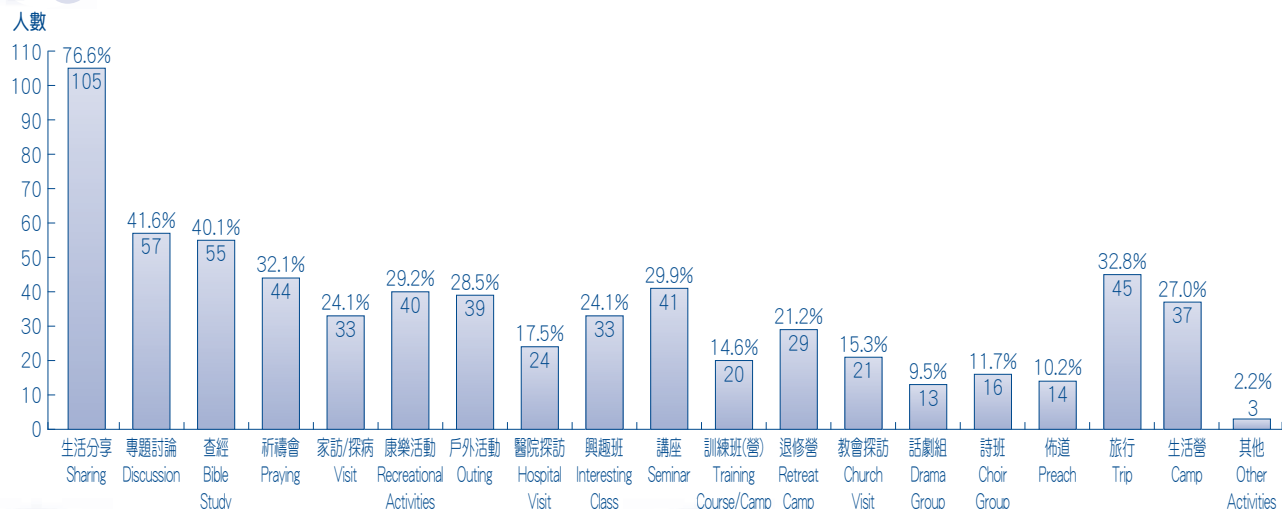
17

所患的精神病 (可多項)
Types of illness Belonged



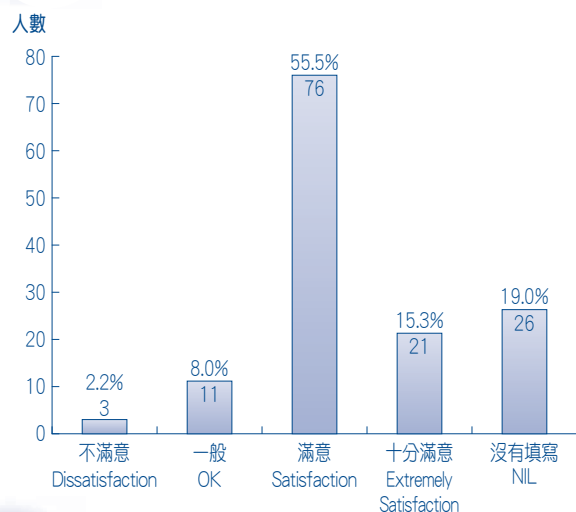
18

喜愛之愛協聚會 (可多項) Activities Favored



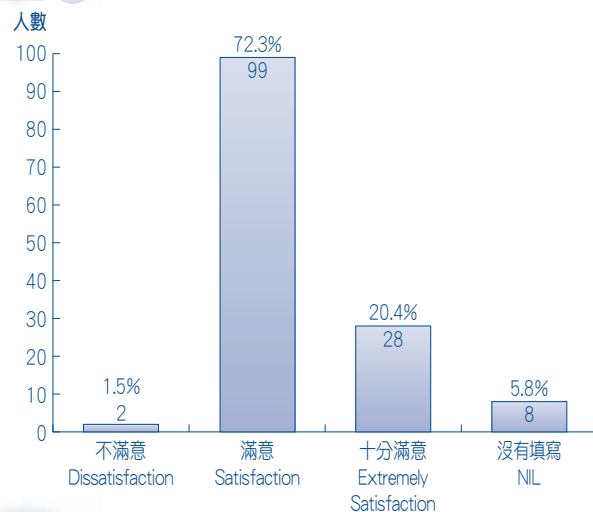
19

生活質素 Quality of Life



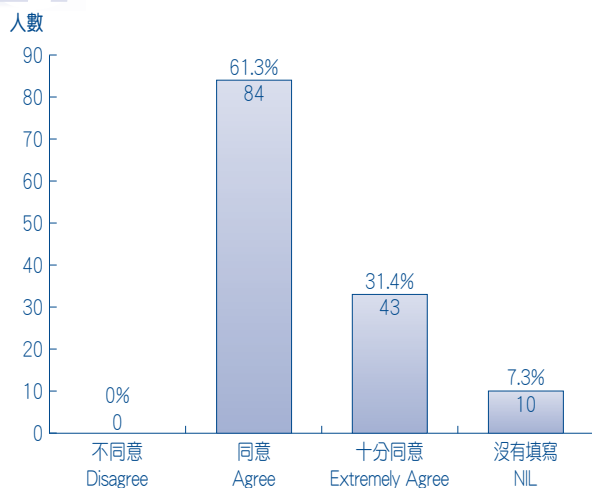
20

自尊 Self-esteem



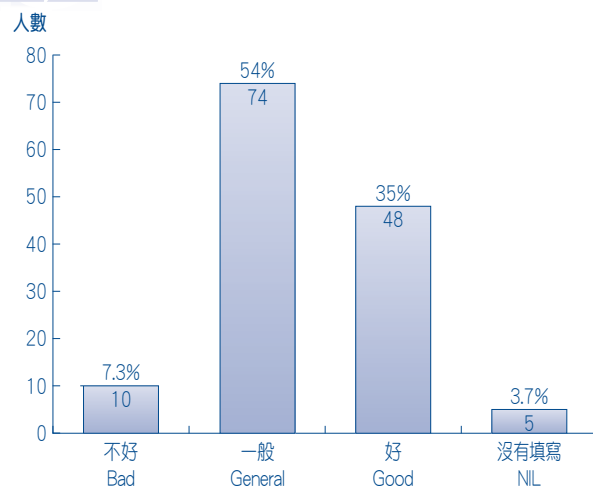
21

小組支持情況 Supported in group



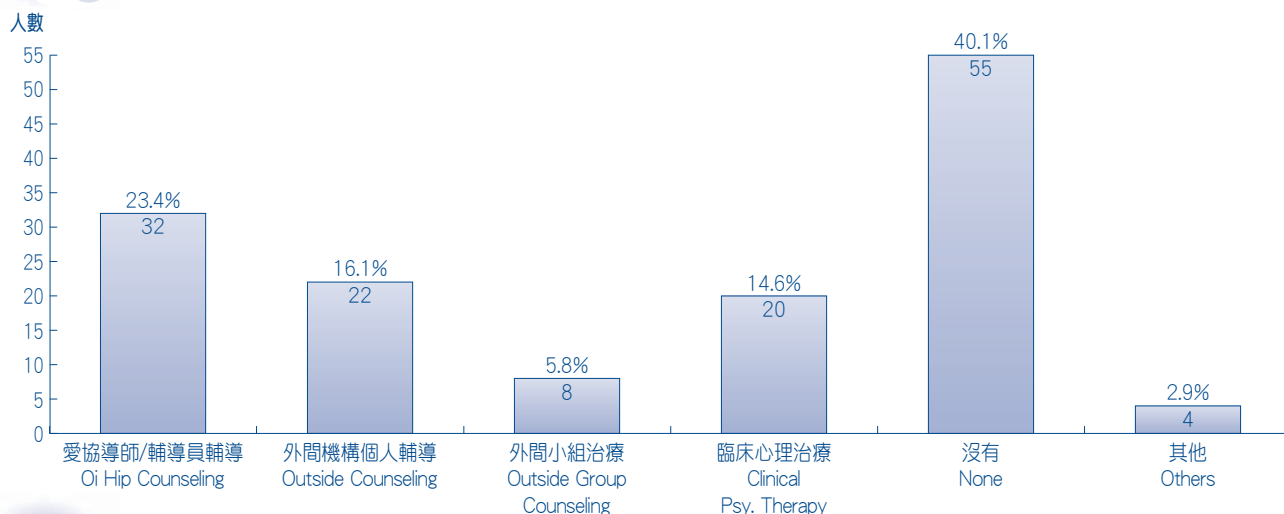
22

情緒 Affective mood



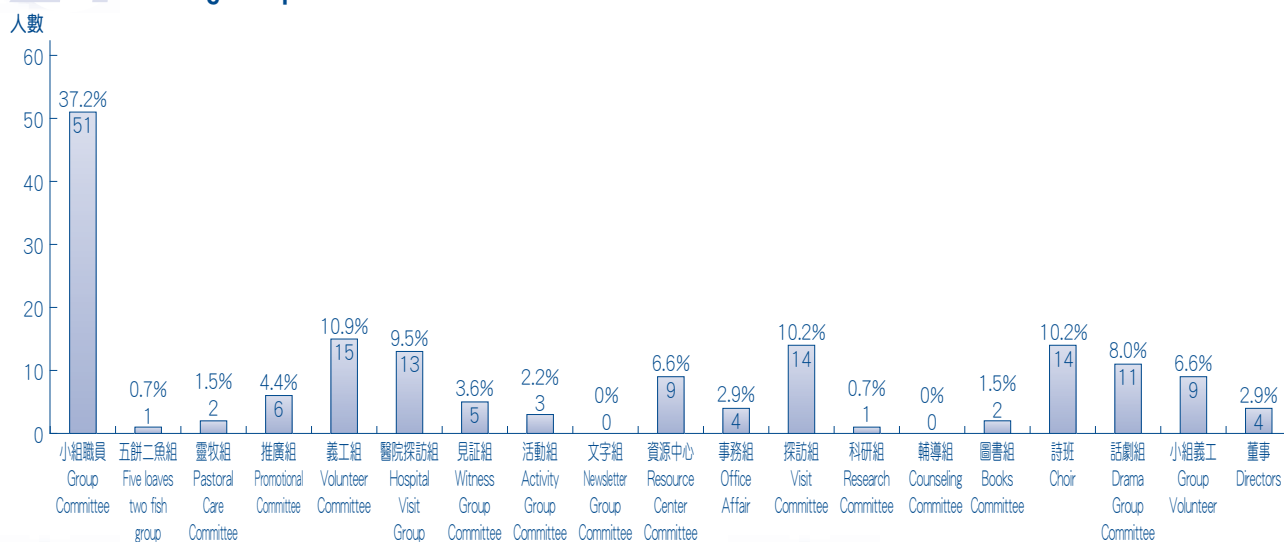
23

過去一年曾接受輔助 (可多項) Assistance Sought During Past



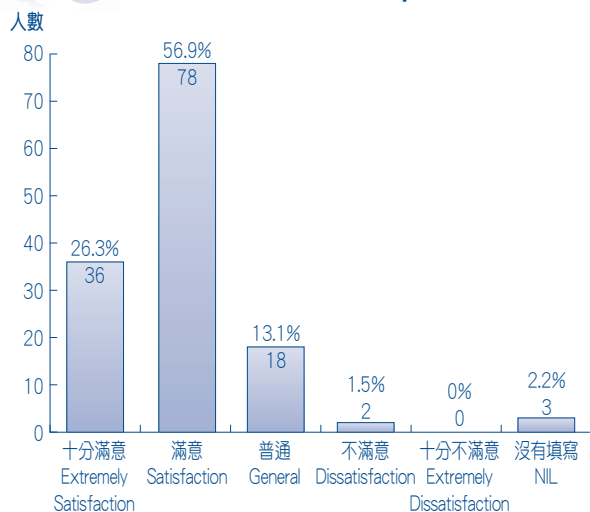
24

過去一年曾在愛協的事奉 (可多項) Serving Oi Hip Last Year



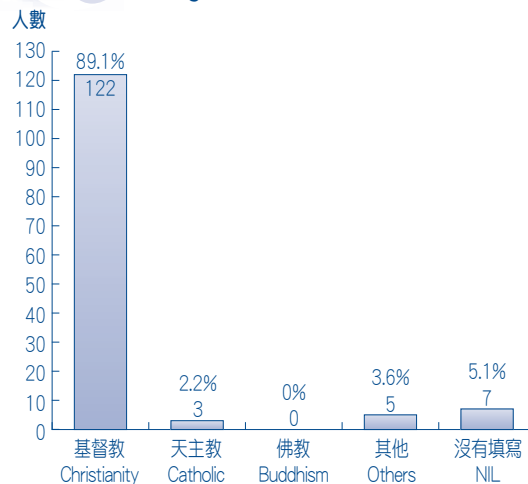
25

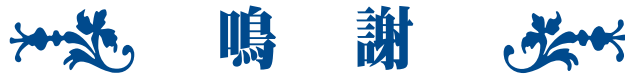
你對愛協小組生活感受 Feel Satisfaction at Group Life



26

宗教信仰 Religion





愛協團契謹此銘謝所有在過往一年中，在事奉上及經濟上一直支持
團契的弟兄姊妹、親友、熱心人士、機構及教會。

在此也銘謝以下機構支持：

香港公益金、社會福利署、怡和集團及猶太人會堂基金。（排名不分先後）

並感謝下列教會和機構借出地方提供予小組聚會：（排名不分先後）

平安福音堂

九華徑基督教會信得堂

新生精神康復會新生會大樓長期護理院

基督教宣道會基蔭堂

香港神託會創蔭坊

大埔浸信會

基督教香港信義會元光堂

循道衛理聯會教會香港堂

基督教豐盛生命堂

中華基督教會柴灣堂

最後亦多謝為我們義務稽核賬目之**吳孫劉會計師事務所**

Acknowledgement

We would like to thank gratefully our beloved brothers and sisters in Christ,
their relatives, some agencies and churches who have devoted their services or/and support
our Oi Hip Fellowship financially for the past year.

We also thank gratefully the support from
**The Community Chest, Social Welfare Department,
Jardine Matheson Group, and The Ohel Leah Synagogue Charity.**

Here we would also like to extend our compliments to the following churches and organizations
which provided places for our group meetings:

Peace Gospel Hall

Christian Kau Wah Keng Shun Tak Church

Kei Yam Alliance Church

Stewards Take Your Way

Tai Po Baptist Church

ELCHK Yuen Long Light Lutheran Church

Chinese Methodist Church

Abundant Life Christian Church

New Life Psychiatric Rehabilitation Association New Life Building Long Stay Care Home

The Church of Christ in China, Chai Wan Church

Lastly we also thanks Ng, Suen, Lau C.P.A. for voluntarily auditing our accounts.

奉獻方法 Donation

1. 可用劃線支票郵寄本會，支票抬頭請寫「基督教愛協團契有限公司」
By crossed Cheque : Payable to "Christian Oi Hip Fellowship Ltd." sending to our office.
 2. 或直接存入恒生銀行儲蓄戶口384-128369-883，把存款收條寄回本會，並於背後寫上姓名及聯絡地址，以便發回收據。
Or deposit into our savings account of Hang Seng Bank : 384-128369-883 and send back the deposit slip with your name and correspondence address written behind. Official receipt will be sent to you.
- * 捐款為認可慈善捐款，可作免稅之用。
Donation is approved as charitable donation and can be used for tax exemption.



地 址：九龍長沙灣青山道 244 號達明大廈 2 字樓
通訊地址：九龍深水埗郵政局信箱 88185 號
電 話：2958 1770 傳真：2386 3075
電子郵址：office@oihip.org.hk
網 址：http://www.oihip.org.hk

Address : 2/F., Tat Ming Building, 244 Castle Peak Road, Cheung Sha Wan, Kowloon.
Postal Address : P. O. Box 88185, Sham Shui Po Post Office, Kowloon.
Tel. No. : 2958-1770 Fax No. : 2386-3075
E-mail Address : office@oihip.org.hk
Web Site : http://www.oihip.org.hk

會員機構：



惠施・捐獻文化
WiseGiving



資助機構：



本計劃由怡和集團
透過捐款公益金贊助